

THE MANGAWHAI FOCUS

Bream Bay - Waipu - Maungaturoto - Mangawhai - Kaiwaka - Wellsford - Warkworth - 17 September 2018

Pensioner skips church for fishing show role

A Mangawhai pensioner couldn't believe her luck when she landed a starring role on popular TV show ADOS Addicted to Fishing.

Hazel Constable, 80, was supposed to be in church that morning, but when she got the call from TV show host and producer Nicky Sinden, she couldn't resist. God loves a fisherman says Hazel, and it's just as well!

Nicky, another Mangawhai resident, says she heard about Hazel when she went to drop a parcel off at the local Post Shop.

"The lady behind the counter there knows I'm always looking for new people to come on the show and she said you've got to take Hazel out, she just loves her fishing."

On the show, the two ladies test the old adage that you should "fish your feet first" by spending the day fishing just minutes from the boat ramp in the Mangawhai Estuary.

"I wanted to show how lucky we are here in Mangawhai," says Nicky. "You don't have to go far to catch fish, you can actually have heaps of fun and take home food for the table without even crossing the bar."

Nicky, who is the only full-time female fishing show presenter in Australasia, loves the fact that her show is 'down to earth', and features many



Hazel Constable (left) and regular show host Nicky Sinden with a good catch. Locals know Hazel just loves her fishing.

keen local anglers from the places she visits.

"There's no barriers to who can appear on the

show. You can be any age, any gender, the only prerequisite is that you have to love fishing," she says.

The show also featured a beach clean organised by Nicky earlier in the year, after her and

a friend were shocked at the amount of plastic waste washed up on their local shoreline. Nicky

says she is a passionate advocate for the environment, and does what she can to help.

"THERE ARE NO BARRIERS TO WHO CAN APPEAR ON THE SHOW. YOU CAN BE ANY AGE, ANY GENDER, THE ONLY PREREQUISITE IS THAT YOU HAVE TO LOVE FISHING,"

- Nicky Sinden

"We're all the ocean's caretakers, so it was really awesome to see so many people turn out to help with the beach clean. Mangawhai is my home, so it's important to me to give something back to the place I love so much."

The Mangawhai episode of ADOS Addicted to Fishing aired last Saturday on Prime but will be available to watch via the ADOS Addicted to Fishing Facebook page.

Snow wish comes true for Jazzlyn. Page 8



CHOICE

Building new, or looking to renew
Your plans - or design with us from scratch

CONFIDENCE

Award winning team and local craftsmen
Building in Mangawhai for over 30 years

ASSURANCE

Backed by Oakland Home 6 Star Guarantee
Master Builders 10 Year Build Guarantee



Oakland Homes

Award Winning Builders
2018 House of the Year Competition



0800 625 526

Peter 027 242 665

www.oaklandhomes.co.nz

PROUDLY PUBLISHED BY
Mangawhai Focus Ltd
www.mangawhaifocus.co.nz

Advertising
Melody Tito 021 454 814
Email sales@mangawhaifocus.co.nz

Editorial
Julia Wade - 0274 641 673

Editorial & Classifieds
Rob Pooley
021 678 358
Email info@mangawhaifocus.co.nz

Accounts
PO Box 522, Whangarei
Ph 09 438 0904



Opinions expressed in this publication are those of the authors and not necessarily those of the Mangawhai Focus. We welcome material from editorial and commercial sources for publication but cannot guarantee that it will be used or that it will be used as submitted.

ED SAID

Feeling the power

No, I don't mean the disruption to the life of a young female Prime Minister trying to juggle her duties with a young family, I mean the actual cost of lighting and heating to the average household – if there is such a thing as 'the average household.'

The news last week told us that home electricity costs were now 80 per cent greater than they were in 1990. What is the actual relevance of such a statistic? We are also told that this last July was the fifth warmest in NZ history. Really? The bushfires in California cover two-thirds the size of Greenland. Statistics like these have little or no relevance to anything and are announced simply to cause gasps of consternation among readers.

But back to our 'power struggle'. While charges may be 80 per cent greater than in 1990, the value of houses has probably increased 500 per cent or more in that time. Wages too have actually increased exponentially so is power really so expensive or is it the way we use power that's the

problem? A case in the media recently cited a family in south Auckland where the Grandmother often cooked dinner late so heat from the stove and the oven helped heat the house for her younger family members. On occasions she has had to borrow to pay a power bill in excess of \$700. The mind boggles when there are up to a dozen people in the house, including many adults who should be contributing, but that's another story.

First of all this is not 1960 but it does bear some relevance. We lived in a house with three bedrooms, a lounge, kitchen, dining room, hallway, sunroom-cum-sewing room and a porch. Let's say nine rooms in all and each lit by just one single light in the centre of the ceiling and when we left a room the light was turned off. We had a radiogram, in 1963 we got TV which in those days ran one channel from 6-10pm. The electric stove was rarely used, the coal range was the favoured cooking medium which, like the open fire was also a wetback – plumbed

to also heat the water, for the benefit of the uninitiated.

Compare that with today. Even the smallest houses are considerably bigger and many have more than three bedrooms, each probably has three or four downlights, plus bedlamps, maybe a night-light, plus a clock radio in each bedroom on constant standby. LED lights use next to no power you say but multiply that 'next to no power' by several rooms when pilot lights from TVs, radios, computers (two and sometimes three per household) never go out. Long showers, heaters, automatic washing machines, dishwashers (both big users of water and power) dryers, computers, huge fridges plus a freezer in the garage. Heatpumps have now become almost mandatory doubling as air conditioners in summer so the high usage never stops. Cellphones, tablets and gadgets that all need charging plus any new mod-cons are all electrically powered and collectively amount to more than

many can afford. An equation says many are spending more than 10 per cent of their earnings on power. From whence did this equation eventuate? And if a household has an income of, say, \$700 a week, is \$280 not sufficient for their electrical needs? Different strokes for different folks of course.

Houses are much better insulated these days. We are sold long life, low voltage, cost saving bulbs yet power usage is constantly rising. The problem is we are now rearing a generation who have never had to economise or make compromises in important areas. We are promised so much through subjective advertising but fail to realise the costs involved. We tend to take for granted all the good things we have available to us but are not prepared to use them rationally. Though it's just so easy to flick on a switch, it's just as easy to flick it off again.

Just my opinion.

Rob Pooley, Editor

Next Issue:

1 October 2018

Copy deadline:

26 September 2018

See Mangawhai weather
by the hour on

www.mangawhaifocus.co.nz



Bible

Be careful what you think, because your thoughts run your life.

- Proverbs 4:23

Quote

My grandfather always said that living is like licking honey off a thorn.

- Louis Adamic

Thought for the week

Study (verb): The act of texting, eating and watching TV with an open textbook nearby.

NZ POPULATION CLOCK

4,903,030. New Zealand's population is estimated to increase by one person every 5 minutes and 55 seconds (Statistics NZ).

Jack Boyd palms to come down

BY JULIA WADE

A Mangawhai Heads street is to lose a number of its palm trees after recent wild weather brought one tall plant crashing down onto the road.

Approximately ten palms which currently grace the centre road garden of Jack Boyd Drive will be removed after being diagnosed with poor health by local arborists, Orang Otang Tree Trimmers.

Parks officer Mike Collins says Kaipara District Council (KDC) asked Orang Otang to assess the safety and wellbeing of the palms and the findings proved what council and Jack Boyd Drive occupants had suspected

– that the trees were in poor condition.

In a letter to KDC, Orang Otang's Chris Howarth says he recommended the trees for removal after discovering several symptoms including poor soil conditions, bad planting and stiling of the root zone, causing a 'strong possibility' for the trees to fall and become a safety hazard.

Other possible environmental conditions such as the spraying of chemicals also lead to the trees bad health he said: 'We highly recommend the removal of the palms entirely and to re-plant... which would be the most cost effective option. A second option would be to dig a larger hole and transplant ex-



Poor planting and soil conditions will see the decline of more palms.

isting palms within the same location. However both the palm specialist and myself don't feel this is the best option. There may well

be existing issues in the soil inhibiting the roots to get established, hence the stiling symptom.'

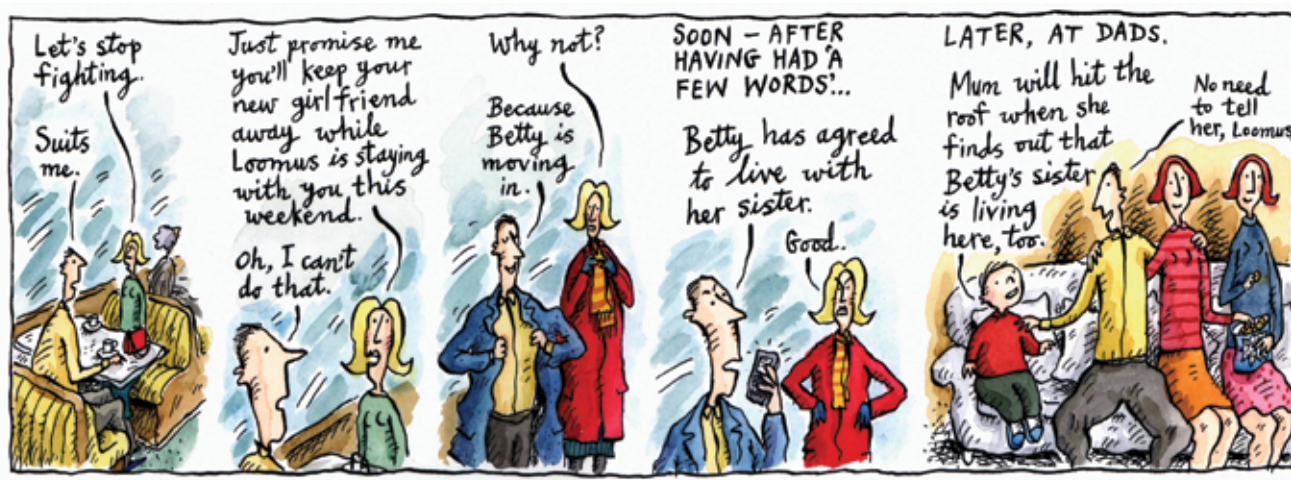
Collins says it is clear the trees will

continue to decline in health and eventually fall over.

"This is obviously a concern as it is a huge risk to people and vehicles," he

says. "Council will therefore be removing these palms and will look at what, if anything, is an appropriate replacement."

STEVEN APPLEBY



MAYOR'S MEMO

Kia ora,

Heralding spring this week are the kowhai blossoms fringing the Kaipara Harbour and found everywhere through gardens and forests, the calves and lambs on the farms and the earliest of the shining cuckoos which have made their annual return to summer in the Kaipara. Watch the human visitor numbers increase from now, too. Some good news last week regarding how we support our visitors to Kaipara has seen Council successfully granted nearly \$500,000 from the Tourism Infrastructure Fund for toilet and walkway development at Maungaturoto, Matakoho and Baylys Beach. This was 100% of the amount sought, and these projects will be fast-tracked with this funding now in place.

Getting on with the job of strengthening the connections between the community and Council, we'll soon be introducing a People's Panel for Kaipara District. I'm delighted to introduce to you this idea which I first suggested for Kaipara back in March and now will be bursting into life soon. The idea is that at least 1000 self-selected Kaipara residents and ratepayers contribute their voice to local civic decisions through the Kaipara People's Panel, a kind of online research forum to better connect Council with all our people. Expect to hear more on this innovative idea soon. We need you to make this great, get ready to sharpen your pencils!

Sharpening our minds right now are issues of climate change, specifically predicted sea-level rise and how it may affect low-lying Kaipara communities, towns and settlements. At a recent national symposium on Climate Change Kaipara District Council representatives challenged the organisers on how we move forward with a solid evidence base for decisions and raise the bar (as well as the stopbanks) at our place. Punching above our weight in this subject is what we're going to continue to do. As we go forward we'll be sharing with the community all the information Council knows – and the gaps in that knowledge too. Together we'll be making tools to cope with possible change as well as tools for hope. Kaipara people are resilient, creative and practical problem-solvers, and I reckon we're in great shape to tackle anything.

Whether you believe the sea level is rising or not, one thing we can all agree on is that the sap is rising right now! Enjoy your start to spring, and all the promise of the new season ahead.

Nga mihi nui, Jason Smith



Kaipara's treehouses permitted with conditions



Talking to neighbours about plans for a treehouse, and keeping within height restrictions, is advised.

BY JULIA WADE

Kiwi DIY tree shacks, from miniature cabins balanced between strong boughs to a couple of rough-sawn platforms complete with sky roofs and leafy windows, have given many children past and present the gift of imagination and outdoor adventure. However the construction, safety and legality of the proverbial treehouse has come under recent examination.

On TV One's Fair Go programme July 2 and 9, a treehouse belonging to an Otago district family was featured after neighbours approached the Dunedin Council enquiring about the proximity of the elevated playground. The story highlighted unforeseen council regulations regarding construction and placement of outdoor playgrounds and posed the question: How do you build a treehouse to code?

For Kaipara residents set on flexing their creative building muscles and showing off their DIY skills to offspring, the same rules presented in the show also apply here.

From information provided by Kaipara District Council (KDC), according to the Building Act treehouses and other outdoor playground equipment such as a

playhouse with a slide attached, are exempt from requiring a building consent as long as the structure is under three metres in height from the supporting ground, and is 'for use by a single private household'.

Any tree hut that falls outside the Building Act exemptions would

require a building consent, however council can make exemptions for structures that do not comply with the building code if they are unlikely to endanger people or property. Any sanitary facilities that are proposed require a building consent regardless of the size.

So if you have plans to create a deluxe, designer-styled treehouse complete with ensuite for your young ones, best to consult with council.

■ *Thinking of building a treehouse or outdoor play equipment? Contact Kaipara District Council for details of the Building Code. Visit kaipara.govt.nz*



North Glass

Auto Glass a Specialty -
Windscreen replacement
Chip and crack repair
Insurance work
Cars, trucks, tractors, diggers...

Windscreen broken? Give us a crack!

09 431 4999
0800 70 40 10

2/194 Molesworth Dr, Mangawhai Heads
info@northglass.co.nz • www.northglass.co.nz

MANGAWHAI VILLAGE

4 FOUR SQUARE

open 7 days

Groceries • Fruit & Vegetables
Wine & Beer • Hardware

How Convenient

Moir Street
Mangawhai Village
Ph/Fax: 09 431 4585



Roger Bull, Osteopath – ACC claims & massage therapist
Waka Abe – Adams, massage and reflexology
Diann Glucina, Harmonym
Phone Kakariki for an appointment.

We stock a wide range of health supplements;
Organic food, face, body & haircare;
Nurtured by Nature organic baby wear & baby needs;
Living Light candles & other gift lines;
Beach, Bach & Beyond homewares;
Plus other locally made products.

Open 7 days: Mon–Sat, 9am–4.30pm
Sun: 10am–3pm

Kakariki – Health & Wellbeing.
Bennetts Complex, 52 Moir St,
Mangawhai Village.
Phone 09 431 4070.

NZ'S LEADERS IN

Eco Sustainable Sewage Systems

Wanting Power Free Sewage Treatment?

- ✓ No Power in treatment processes
- ✓ Natures Active 'Bio-system'
- ✓ Odourless, quiet operation
- ✓ Extremely low maintenance needs
- ✓ Modular with low site impact
- ✓ Free Onsite Assessments



naturalflow
eco-wastewater & sewage systems
by Waterflow NZ Ltd

Call us now for a free info pack

0800 628 356

www.naturalflow.co.nz

Strong

CHARTERED ACCOUNTANTS

approachable | innovative | personal

There are no traffic jams
along the extra mile.

Contact us today for a FREE CONSULTATION

P: 09 431 4521
E: team@strongca.co.nz



Learn the art of community engagement

Kaipara District Council presents a unique opportunity for civic and community minded businesses, individuals or groups to learn more about developing ideas and tools for successful community projects.

Now, more than ever, communities need to work together to build trust and inclusivity. Today's civic challenges demand new models for collaboration and leadership. Powerful, inspiring and meaningful community engagement takes time, skill and practice.

Pomegranate Center offers the tools and structure to make this work easier and more successful. Their trainings give confidence in facilitation skills, competency around community process and a deeper understanding of the importance of a creative and collaborative approach to all things community.

In this introduction to the Pomegranate Method to be held at the Paparoa War Memorial Hall early next month, guests will learn how to fully engage communities in a productive and creative process while creating broad ownership over your projects. Each training is a combination of lecture, practice and discussion led by

the dynamic founder of Pomegranate Center, Milenko Matanovic.

The training will cover:

- How to care for an early idea for a community project
- When to engage the community and what to ask them
- What to do when challenging behaviors threaten collaboration
- Facilitation techniques that are inclusive and decisive
- Translate public input into solutions quickly and collectively
- And so much more!

Based in Seattle, Washington, Pomegranate Center training is designed to strengthen communities through supporting community-based collaborative culture. They specialise in training and mentoring individuals and agencies in building lasting, effective community engagement strategies.

■ *Pomegranate Method Training, Oct 8, 9.30am - 4pm, Paparoa War Memorial Hall, Paparoa Valley Road. Light Lunch provided. No cost, but registration essential. Registration closes Sept 28. Contact Gail Fotheringham, Community & Recreation Advisor at Kaipara District Council, gfotheringham@kaipara.govt.nz or 021 434 228.*



All is not what it seems. Felled trees and bare dirt has caused dismay and anger among some community members, however it's all part of the bigger plan Council says. (PHOTO/Supplied)

Tree clearing all part of the plan says committee

BY JULIA WADE

The recent felling and clearing of trees and plants within an ecologically valuable wetland and native forest has caused confusion, concern and dismay among some Mangawhai residents.

Located in the area defined as Mangawhai Community Park (MCP) – land stretching along Molesworth Drive between the local golf course and Mangawhai Museum – large manuka, ponga's and other native flora and fauna have been cut and removed from bushland behind the Pioneer Village.

Locals expressed their shock and outrage on social media at what appears to be the destruction of forest along walking and bike tracks, on what is believed to be preserved land.

'It's so sad' said one Facebook post, 'this was

once the best part of the walking track and now it's bare dirt and treeless.'

However the MCP governance committee who oversee the management of the park, say the work is all part of the park's Master Plan.

Committee chair and Kaipara District Councillor Anna Curnow says the committee was aware of the clearing of the land and 'is comfortable the location of the walkway is aligned to the direction set out in the Master Plan'.

"Work has begun on the access walkway that will connect the eastern side of the park with the museum area. The walkway is being developed in such a way as to allow access to small vehicles such as quad bikes so that maintenance and emergency access is easier. However, this work has been put on hold while issues relating to consents for earthworks in wetland

areas are resolved."

During an operational inspection of the new walkway it was discovered that the scope of work had increased from what was originally planned, KDC public affairs officer Ben Hope says.

"When this was noticed work stopped to establish what was to happen next, and to ensure that the work that had been completed was done correctly," he says. "Council staff and members of the Friends of the Mangawhai Park are working together to get work on the track started again as soon as possible."

The Master Plan, which is implemented by the committee, defines the development of MCP and was adopted by Kaipara Council in 2015, after extensive and in-depth input and consultation with the Mangawhai community.

Objectives of the plan are to help visitors to experience the natural beauty of the park by protecting and enhancing the ecological landform and natural character through revegetation, restoration and biodiversity, as well as developing access and trails which connect the different areas such as the Museum to the Mangawhai Activity Zone.

"The master plan sets out ideas for the location of the walkways to be developed... and directions for replanting and landscaping following development," Curnow says. "The community can rest assured that budget has been set aside for plant and land restoration following the completion of the walkway."

■ *Mangawhai Community Park Master Plan can be viewed on the KDC's website under Mangawhai Community Park.*

MANGAWHAI HIRE

Putting Off Those Renovation Jobs?



Earn bonus points with your 'better half'

- finish all those indoor jobs before next summer!

We can help get it sorted in time!

Specialist tools and the best advice are right here -

196 Molesworth Drive, Mangawhai Heads Phone: 431 5424

Open 7 Days - 7.30am to 5pm (closed public holidays)

LETTERS TO THE EDITOR

Rates unfair

The Northland Regional Council and the Kaipara District Council seem to have a 'winners and losers' rates system.

Over the last eight years my NRC levy has risen 155% and my KDC rates 110% (more than double the average).

Many others have also paid well above the average increases, while many pay less than the average.

Old-age pensioners like me have been unfairly penalised hundreds of dollars.

When my land value fell 30% to \$122,000 my levy/rates still went up!

Mike Vincent
Maungaturoto

Suicide seminar

The article written in the last Mangawhai Focus entitled 'Shining Light on the Darkness of Suicide' (Sept 3) was a comprehensive summary of the seminar hosted by Te Whai Community Trust on August 9. Many valid points were made about the seriousness of this situation in our community and indeed across our country.

However, as an attendee in support of such an initiative, which was advertised as 'an opportunity to start a discussion in the community' I am compelled to question the comments made in the article regarding the lack of professional development for practitioners at local agencies. Stating that attendance by the

'professionals' from Otamatea Community Services (OCS) suggested that there was a lack of professional development in this very important field is completely incorrect.

The OCS 'professionals' attended this seminar to join in 'discussion' with the community hoping to offer support and knowledge, if needed. The seminar was informative but 'opportunity for discussion' was not available as it was also a very generalised talk, not specifically targeted at any of the affected groups attending, i.e. parents, youth, interested community members, and professionals. Unfortunately some people had to leave early. Also, I do acknowledge that the word 'discussion' does not necessarily have to be literal.

For our Kaipara community knowledge, at Otamatea Community Services there are five Counsellors who are very well trained in helping people meet many challenges in life, including those who find themselves considering suicide as an option. We would like our counselling services to be emphasised as available for all in our community.

OCS also offers many more services: Social work, financial and budgeting services, parenting support, care for seniors, addiction support, plus a volunteer bank which is expanding daily. We are a fast growing and vital local community service available across the Kaipara. And we are completely funded, meaning all services are free

of charge to the public. If people need help of any sort they can call OCS on (09) 431 9080.

Pauline Wilson
Otamatea

History deleted

On August 31 a conversation thread on one of Mangawhai's most popular Facebook groups that was being participated in by large number of contributors, was suddenly deleted without notice. A comment similar to that which I repeat below was also deleted.

Being discussed and debated was an important issue that we New Zealanders seriously need to look into more deeply in order to gain an understanding of what opinions, at-

titudes and behaviours might be more appropriate in accordance with these learnings.

People maintaining discussion forums on social media platforms have a natural responsibility to maintain our discussions, by moderating abusive behavior, not by arbitrarily removing our right to exercise our freedom of speech to explore the issues our community faces.

There is also a natural responsibility to maintain an archive of our discussions so that we have a reference of our society's ethical evolution.

A society that refuses to investigate its faults is doomed to endure them.

Alan William Preston
Mangawhai

Brynderwyn kiwi numbers holding steady



Volunteer pest trappers controlling predator numbers has been vital to the breeding success of kiwi in the district.

The kiwi breeding season is well under way and male kiwi will be patiently sitting on their eggs waiting for the chicks to emerge at the end of the 80 day incubation period.

There is every reason to believe that numbers are gradually increasing in light of this year's annual kiwi call count monitoring. This is the prime method used to assess population growth or decline and has been undertaken at Marunui Conservation each year since 2014.

At a key listening station a total of 45 male and female calls heard from 6pm to 8pm over four nights were recorded, an increase of 19 calls over last year's total of 26 and 11 more than was heard in 2016.

While there is variation, depending on the weather conditions and the time of the month when the monitoring occurs, John Hawley takes confidence from the figures.

"Measures being taken to protect the birds both inside and outside

of Marunui seem to be working. Intensive control greatly increases the survival rate for kiwi and other native species and our volunteer trappers have played an important role in these outcomes."

From March 2014 to June 2018 a significant number of predators have been removed. These include 202 stoats, 367 weasels, 8 ferrets, 54 feral cats, 3506 rats and 568 possums. Rat and possum numbers do not include the many killed by annual baiting.

Other factors contrib-

uting to kiwi protection this year have included good dog control and increased community participation in trapping. In March 37 dogs (domestic, farm and pig hunting dogs) underwent kiwi avoidance training. Fifty people attended a trapper training workshop at Mangawhai in June, some wanting to upskill and others keen to learn the basics.

Meanwhile the Waipu Kiwis group has formed on the north side of the Brynderwyns, focusing their attention on

the Waipu-Langs Beach area. Their trapping is yielding high predator numbers and is building on and coalescing with Marunui's work.

As a result of these combined efforts to protect kiwi, the Mangawhai/Brynderwyns/Waipu area has been designated a high value pest control area by Northland Regional Council with generous funding made available in its Long Term Plan, an exciting development.

Waipu venue for pest trapping workshop

Trapper training workshops have been held in Mangawhai through the Marunui Conservation Trust. Next weekend will see the first to be held in Waipu.

Todd Hamilton from Backyard Kiwi will lead the trapping workshop with Ngaire Tyson from Kiwi Coast and Steve Henderson, Northland Regional Council.

Todd will explain why, in unprotected areas, 95 per cent of kiwi chicks don't survive, and demonstrate the different types of traps, how to bait and set them, and how to check them regularly.

With the kiwi released four years ago in Marunui now breeding, safe space is needed for them to spread out on both sides and across the Brynderwyn Hills (Piroa). A network of traps called 'the ring of steel' affords protection at the top of these hills. This network needs to expand further to the bush areas and farmland around Waipu, Langs Beach, Bream Tail and Mangawhai to deal to the main threats to kiwi.

Targeted rates funding from Northland Regional Council will be used to grow the trap network from around 400 to a target of 1000 over the next five years.

Key threats to kiwi are mustelids with stoats at the top of the target list. Natural-born killers, stoats can kill several times a day. Kiwi eggs and chicks are especially vulnerable. Ferrets and weasels are also found quite commonly around Waipu and the hills. Possum and uncontrolled dogs are also high on the list.

Locals have already shown a lot of interest in trapping networks on both sides of the Brynderwyn Hills and on the Waipu Spit but there is a need for more volunteers to keep up with the trap bait renewals during the summer season.

Technology such as the Traps.nz software helps by using GPS to locate traps, update records and tally up catches for reports.

■ The workshop is a great refresher or opportunity to learn new skills but space is limited so email Ann at aneill.nz@gmail.com or phone 027 432 1833 for a reservation. Details: Sunday September 23, 1.30pm to 4pm, top of Massey Rd, Waipu.

Mangawhai Museum
The Spirit of Mangawhai

ADMISSION
Adults \$6
Children \$3
under 15yrs

Includes entry
to Museum

Mangawhai Museum brings you our annual

**ANTIQUE
FAIR**

6th AND 7th OCTOBER 2018

For more details go to www.mangawhai-museum.org.nz

Mangawhai Museum thanks
Mike Pero Real Estate for their
ongoing support.

Supporting Mangawhai
Mike Pero | REAL ESTATE

ART & SOUL

Suffrage celebration captured in print

Mangawhai artists Nicola Everett, Lynn Middleton and Tatjana Panyoczki are joining other artists in marking the 125th anniversary of women's suffrage in New Zealand.

Nicola and Lynn are joining 125 New Zealand printmakers in a project '125 CELEBRATE 125'.

Printmakers throughout NZ have contributed A4-paper prints which make up two carefully collated boxed sets. The prints will be displayed and archived as part of New Zealand's 125 Suffrage Celebrations.

"My work is about the resourcefulness of women, particularly my grandmother, Rosanna Sarah Partridge, who was constantly stitching," Nicola explains. "During The Depression she reworked clothes over and over."

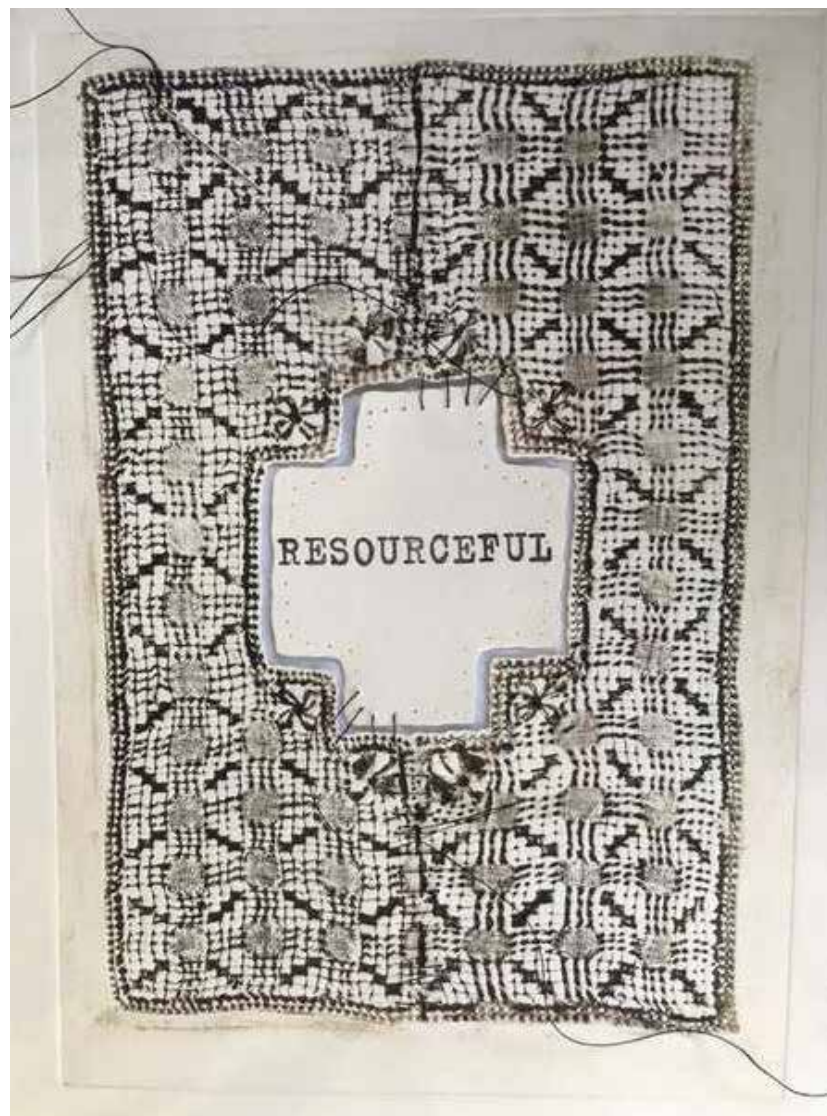
Nicola says that being resourceful is becoming a more valued skill today especially considering the futures we may face.

In a work called 'Forget me Knot', Lynn has used women's hair and cotton threads to represent the strength that comes from working together, shared energies and collective strength. The forget me knot is set within embossed grid lines to illustrate the opposition faced by suffragettes and remembering the imprisonment of UK suffragettes.

Organised by the Franklin Print Group, imagery in the prints celebrates the lives, roles, presence and influence of women, inspired by history, our national story, and each artist's personal experiences or thinking. The printed imagery is primarily generated by a hand-made print process.

In 'Stories of Hankies and Heroines', Tatjana Panyoczki has joined other artists in an exhibition 'Empowering Women - 125 Years of Women's Suffrage in Aotearoa' at Masterworks Gallery Auckland from 26 August - 19 September.

Nicola, Tatjana and Lynn are members of Mangawhai Artists Inc. There is an opportunity to see more of Nicola and Lynn's work when, and along with five other Mangawhai printmakers, they will be exhibiting in the Mangawhai Artists Gallery from Friday October 12 in an exhibition of printmaking.



A stitched work by Nicola Everett.



Success for Waipu junior performers

Emma Couper of Waipu, herself a singer of considerable acclaim, recently fielded a junior team of up and coming young Waipu performers at the Northland Performing Arts competitions with some pleasing results.

Amber Arden (pictured) was first in Novice Solo with her rendition of 'Bright eyes' from Watership Down, and second in Sacred/Gospel music.

Hayden Fraser was also a winner and Northland Junior Vocal Champion.

Kaiser Jacoby was also a winner, while

Oliva Papworth and Jamie Grace received highly commended awards.

Coach Emma is a classically trained vocalist who often sings as a soloist throughout Northland and greater Auckland. She also has a love of theatre, recently playing the role of Tanya in Mamma Mia.

Her teaching involves vocal technique, including breathing and support, improved pitch, vocal range and intonation. Students learn performance skills and are encouraged to perform both solo and group songs.

Mangawhai Heads Tide Table

SPONSORED BY

Shane Cullen Contracting

Date	High	Low	High	Low	High
Mon 17 Sep	00:43	06:44	13:14	19:15	-
Tue 18 Sep	01:33	07:37	14:10	20:12	-
Wed 19 Sep	02:26	08:35	15:08	21:11	-
Thu 20 Sep	03:23	09:36	16:06	22:07	-
Fri 21 Sep	04:21	10:34	17:00	22:59	-
Sat 22 Sep	05:16	11:26	17:49	23:47	-
Sun 23 Sep	06:07	12:11	18:33	-	-
Mon 24 Sep	-	00:31	06:52	12:52	19:14
Tue 25 Sep	-	01:12	07:34	13:30	19:53
Wed 26 Sep	-	01:51	08:13	14:08	20:32
Thu 27 Sep	-	02:31	08:52	14:47	21:12
Fri 28 Sep	-	03:11	09:31	15:26	21:53
Sat 29 Sep	-	03:52	10:12	16:09	22:36
Sun 30 Sep	-	05:35	11:56	17:54	-

SHANE CULLEN

CONTRACTING LIMITED

027 281 0659 shane.cullen@extra.co.nz



Dams Driveways Earthworks Entranceways House Sites Metal Supplies
Mulching Roding Section Clearing Stabilising Sub-Divisions Trenching

Bulldozers - 9 Ton - 12 Ton Diggers 12 Ton - 3 x 13 Ton - 16 Ton - 20 Ton - 21 Ton - 24 Ton
Graders - 6x4 - 4 x 2 - Rollers - Pad Foot - Double Drum Tractors - Mulcher 2-7m - Scoop - Spiked Hoe
3m - Trailer Trucks - 6x4 Tipper - 4x2 Tipper - 30T Dump Trucks - Tracked Dumper Transporters

Northpower Network Notice

Line Maintenance in the Maungatapere area

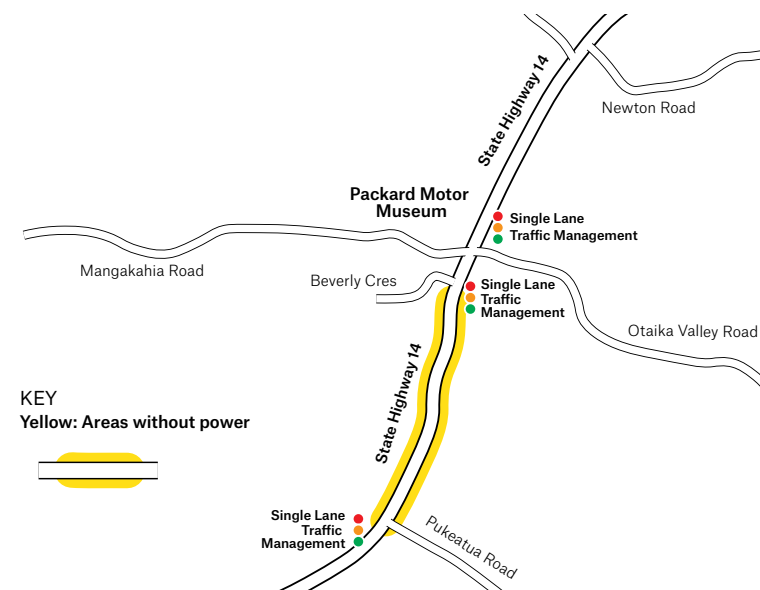
Northpower will be upgrading the powerlines in the Maungatapere area over the next month or so.

There will be power outages that will affect properties in the area as marked on the below map on:

Sunday 23 September from 8.30 - 4pm

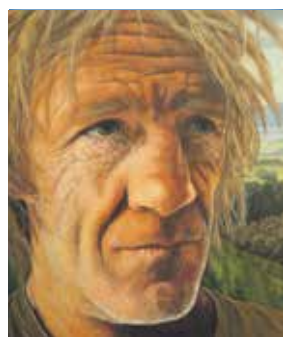
We apologise for the inconvenience these outages will cause.

Most of the work will occur on the above Sundays to minimise the traffic disruption on State Highway 14, as required by the NZTA. During the Sunday work there may be traffic delays in the below area.



For power and hot water faults:
0800 10 40 40

General enquires: 0800 66 78 47
Visit: northpower.com


**WORZEL'S
WORLD**
**Social
commentary
by Chris Sellars**

The Power of Propaganda

Those in power make the rules. Traditionally they are called rulers, but this does not necessarily mean they are straight. The rules they make favour the powerful and are enforced at the expense of weak and apathetic people. There is nothing new in this. Throughout history the downtrodden, the uneducated, and those vanquished in battle have always been enslaved by tyrants. One of the more common lies is, 'I'm from the Government. I'm here to help'. It is part of human nature to believe such comforting lies rather than an uncomfortable truth.

It was not so very long ago that with Teutonic efficiency a group of people were systematically collected, transported, killed and disposed of. Told they were being re-located to work camps for the good of the fatherland they believed it. Why, asked the Jews, would a pragmat-

ic people waste such a large labour force? It's a question that has never been reasonably answered. When rumours of cyanide showers and ovens built to cremate their countrymen circulated in Nazi Germany, most still preferred to believe the work camp myth rather than the awful, almost unbelievable truth. Had they known from the outset the intentions of their masters they would have surely organised some resistance.

It is impossible to systematically exterminate six million people without their consent and co-operation. That consent was obtained by trickery and coercion. Brute force is not efficient and was only used as a last resort to mop up the last few pockets of non-compliance. When the war ended and the terrible truth revealed, the world gasped; how could this happen? The answer is encapsulated

in a single word: complacency. And it is complacency that will allow something similar to happen again.

In Hitler's fascist regime they were only beginning to see the potential for deception through propaganda – fake news if you like. Hitler, Himmler Goering and co could not conceive of a way to persuade other Euro-

pean Union that the Third Reich could not realise through military might. Three years after the Brexit vote English people are now finding out just how hard it is to break free from the claws of globalist bureaucratic tyranny.

Propaganda is not confined to Europe. Much of what is called 'educating the public' has nothing to do with

then paint themselves as heroes and champions of the common good for riding rough shod over a disempowered populace. I wonder sometimes, is this a good deal? Can I have my money back? The Consumer Guarantees Act states that 'if goods are not suitable to their advertised purpose they can be returned for a full refund'. Sadly I

she'll be right' proudly egalitarian nation a hungrier, greedier, less forgiving and more humourless place. In two score years we have gone from an almost entirely middle class society to the fourth most unequal nation on earth in terms of income. In the end everyone has lost.

For all our purported progress, our time

and is a real and harsh punishment that it can never be for a company director or an executive officer on a six figure salary.

The lie of prosperity through corporatisation is proven by the steady rise in such things as cancer, autism, suicide, depression, homelessness, the prison population and benefit dependency, and the resurgence of previously rare third world type diseases. The New World Order agenda is to label things the opposite of what they actually are. Increasing corporate control was sold as a free market. Trickle down turned out to be vacuum up.

These detrimental changes are not as they would have you believe – the result of bumbling incompetence by public servants and politicians doing their best but failing. They are rather a carefully planned and executed strategy for power and control. It is time to wake up before it is too late.

■ Feedback? Email prof_worzel@hotmail.com

Persuasion and propaganda achieved a European Union that the Third Reich could not realise through military might. Three years after the Brexit vote English people are now finding out just how hard it is to break free from the claws of globalist bureaucratic tyranny.

pean nations to submit to a united Europe. Consequently they tried to enforce this agenda through military means. The world was plunged into war as nations resisted loss of individual and national sovereignty. And only a generation later persuasion and propaganda achieved a Eu-

education at all. It is designed to persuade us to behave in ways most convenient to those wishing to obtain or maintain control.

We of the post modern proletariat are compelled to pay people – and by and large not especially bright ones – to tell us what to do and how we must do it. They

don't think this extends to politicians, corporate directors, or investment brokers.

Corporatisation, privatisation and the Americanisation of our market place has left more losers than winners. Greater disparity between the haves and the have nots has made our once 'no worries mate,

and labour saving inventions, rich or poor we have less time and more confusion than ever. This ever broadening gulf renders meaningless many aspects of our law. For instance a standard fine for a minor transgression can represent great hardship to those in the lower income bracket

WALKING WEEKEND

Countdown to Mangawhai Walking Weekend 2019

2019 marks the 20th anniversary of the annual Mangawhai Walking Weekend.

The event was conceived as an opportunity to encourage the community to get out and enjoy our wonderful outdoors, and to provide a stimulus for the business community by holding an event that would attract visitors at the end of the summer season.

The Weekend has, and continues, to meet these twin objectives.

Next year's event will be a special birthday celebration and will feature some of your favourite walks, both short and long, together with the fabulous entertainment of the Troubadour Trail and Food & Wine Festival.

Look out for the full programme published on December 1 online at mangawhaiwalking.co.nz.

Bookings will open January 4 2019, with the event running March 28-31.

Many of the events are likely to sell quickly, so organisers encourage the community and long-term supporters to get in and make their bookings early.

This is a community driven event. The organising team is extending a welcome to members of the community who are able to assist in organising, or to help out on the day. Please contact Dorothy on 431 5950.



**BIG DISCOUNTS
FOR HOUSE LOTS
AND SENIORS**

- Mobile "in-your-home" service
- Pensioner & house-lot discounts
- Hundreds of samples
- 25 years in interior design

**FREE CURTAIN MAKING (OVER \$30/m)
UP TO 60% OFF BLINDS**



**FOR A FREE MEASURE & QUOTE
PHONE LESLEY
09 432 7140**

windowdecor@hotmail.com

WINDOW DECOR LTD
Servicing Bream Bay & Mangawhai

MONTHLY DROP IN SESSIONS

with
Northland Regional Council
Coastal South Councillor - Rick Stolwerk



Monday 1 October

- | | |
|-----------------|---------------------------------|
| 9.00 - 10.00am | Maungatapere - The Office Cafe |
| 10.30 - 11.30am | Ruakaka - WDC Offices |
| 12.00 - 1.00pm | Waipu - Deli Cafe |
| 1.30 - 2.30pm | Kaiwaka - Kaiwaka Hall entrance |
| 3.00 - 4.00pm | Mangawhai - Mangawhai Museum |

Phone 021 823 770
Email: ricks@nrc.govt.nz

Mike Pero
REAL ESTATE

Mike Pero Real Estate Ltd Licensed REAA (2008)

Thinking of Selling?
Call Alan Corkin

09 431 5974 | 021 906 901
alan.corkin@mikepero.com





Jazzlyn and friends. At back, 'wish fairies' Maggie Cameron and Dianne Christensen from Bayleys Mangawhai. In front, Jade (3), Jazzlyn, and Te Aomarama (8).

Jazzlyn makes a wish

In early 2017, 10-year-old Maungaturoto girl Jazzlyn Martin began suffering headaches followed by loss of appetite and dehydration. Her Mother Katrina picks up the story. "Though she had been to the doctor she wasn't getting any better but when she developed vision problems and eye diversion I thought I had to take more drastic steps to diagnose her problem."

In May last year Kat-

rina took Jazzlyn to have a CT scan which revealed a massive brain tumour and saw her sent immediately to Auckland's Starship Hospital for a major operation.

It was during her recovery that the family met local Make-A-Wish New Zealand volunteers Dianne Christensen and Maggie Cameron.

The Make-A-Wish society was set up in New Zealand in the mid 1980s

to grant the wishes and bring some magic and joy to the lives of sick children – a bucket list for children.

Months of treatment and radiation followed her operation and now Jazzlyn is almost back to her old self though she still has regular scans to make sure any problems don't recur.

"It's hard to describe the upheaval to a family with something like this," says Katrina "but we have

met so many wonderful people along the way and are very thankful to have a good outcome."

Jazzlyn's one true wish was to see the snow. She wanted to play with her sisters in the snow, make snowmen, and throw snowballs. So naturally, the wish fairies at Make-A-Wish New Zealand thought that a trip to Queenstown in the winter would be ideal.

In August Jazzlyn and

her family were flown down to Queenstown where they went go karting, on the flying fox at Shotover Canyon, up the Skyline Gondola and visited Snow Farm NZ and Puzzle World.

Jazzlyn's wish was made possible through the support of the Bayleys Foundation and the local Bayleys real estate team so there's been a lot of local input to make Jazzlyn's wish come true.



Jazzlyn's snow wish comes true!

Farm & Lifestyle Centre
WARKWORTH

SEPTEMBER ARRIVAL

DeWit
World's Best Garden Tools

Comprehensive range due this month
MORE THAN A TOOL IT'S AN HEIRLOOM

SEE US FOR ALL YOUR FENCING NEEDS:
CATTLE, SHEEP, CHICKENS & DOGS, ELECTRIC & STANDARD SOLUTIONS

Y POSTS
•
WOODEN POSTS
•
GATES
STEEL & WOODEN

Offers end 31 Oct or while stocks last.

WIRE COILS
•
SQUARE MESH
•
CHICKEN MESH
•
HARDWARE

Pel 702S energizer
up to 2km of fence
\$260.00
limited stock

Politape 200m
\$39.95

2-4 Morrison Dr, Warkworth | 09 425 7754 | Mon-Fri 8-5, Sat 8am-1pm | www.farmandlifestyle.co.nz | www.facebook.com/farmandlifestyle/

It's a first year hair affair



The Headz of Hair team, from left, Therese McNamara, Roseanne Rye, and Olivia Willis.

It has been held for centuries that a woman's hair is her crowning glory. This is also the firm belief of the team at Headz of Hair salon in Mangawhai which has recently completed its first year in business for owner Roseanne Rye.

"There are so many facets to hair," says Roseanne, "from style, length, colour, and what trends might be in vogue."

But she insists while much of it relates to glamour there is a lot of simple practicality attached to hairdressing.

"Sure we love doing hair for brides and Mothers-of-the-bride and teens for their school balls," she adds, "but often Mums and Grand-Mums just want a shampoo, trim and set or maybe some tint to freshen up with a new look and have some pampering. We're in the

'feel-good' business and customer satisfaction is paramount."

The dedicated team which numbers six in total have a wealth of training and experience behind them. A former local, Roseanne herself trained as a hairdresser then worked extensively overseas before coming full circle back to Mangawhai, while her understudy Therese has experience from world renowned Rodney Wayne studios.

Though they are not specifically having a first birthday party, there will be special deals on offer for regulars and new clients packs for newcomers along with the traditional coffee and bikkie for all customers.

"It's a thank you to the community without which we wouldn't be here," the girls agree. But it's not all about the girls.

"We are now seeing a rise in our male client numbers too," says Roseanne. "Our 'man cave' idea has been so successful we are opening a second one, proving guys are not beyond a bit of pampering either."

While much of Mangawhai is going plastic bag-free, Headz of Hair is also doing its bit for the environment stocking and using predominantly biodegradable products from the prominent NAK range.

So, be it a shampoo and set, a bob, a hair up, braids for the girls, or short back and sides and beards for the guys, Headz of Hair is the place to go. Rumour has it that a new stylist is about to hit the scene as well, so watch this space.

■ Contact Headz of Hair. See advertisement below.



HEADZ OF HAIR

SHOP 8, 7 WOOD STREET
MANGAWHAI HEADS
09 431 4981
Headzofhair@hotmail.com

YOUR HEALTH

Acupuncture: The perfect modern medicine complement

Acupuncture is part of the Traditional Chinese Medicinal (TCM) system, which has been used to diagnose, treat, and prevent illness for more than 3000 years. It is accepted around the globe as a safe, effective and holistic alternative or complement to modern conventional medicine.

Acupuncture promotes a deep state of relaxation and stimulates the body's ability to self-heal. It balances hormones and blood flow, removes blockages and pain and brings vitality to tired, weak areas of the body. Acupuncture treatment is generally pain free.

Pain is one of the most common reasons one may seek acupuncture treatment, however because acupuncture is a complete health care system, there is very little that does not benefit from a course of treatments.

Conditions that acupuncture may treat are: acute and chronic pain conditions such as neck, shoulder, back, knee, ankle injuries, sciatica, and arthritis, mens and womens fertility, pregnancy, and labour induction, stress, anxiety and depression, headaches and migraines, digestive disorders, addictions such as smoking, eating disorders, drugs and alcohol. Constitutional facial acupuncture for facial rejuvenation is also popular.

During a treatment fine, sterile, disposable acupuncture needles are inserted into several of the many hundreds of acupuncture points to stimulate and facilitate the flow of Qi assisting to restore balance and harmony to the individual.

Each person is treated for his or her individual imbalance and treatment is personalised regardless of the disease or con-

ventional medical diagnosis.

Acupuncture prompts the body to recover from the negative effects of stress. It makes one feel light, calm and relaxed. Try it for yourself and enjoy the benefits!

■ Lara McInnes is a registered acupuncturist and ACC treatment provider, with a special interest in sub-fertility for both men and



Lara McInnes

women. Lara is at Waipu Natural Health every Tuesday, 3 Cove Road, Waipu. Contact

waipunaturalhealth.co.nz, 022 155 7811, acubalance.co.nz, (09) 432 1325.



Waipu Natural Health

3 Cove Road, Waipu
(opposite the Pizza Barn)

Ph: 432 1325

www.waipunaturalhealth.co.nz

Clinical Nutritionist:
Hair Analysis for Food Sensitivities

Naturopathic Physicians: Ozone,
Prolotherapy, Marine Plasma

Reflexology: Craniosacral Therapy,
Acupuncture, Massage Therapists

Naturopath and Medical Herbalist

Hypnotherapy/Counselling

Thetahealing/Change Catalyst

Supporting The Bright Path
Meditation Technique

Affordable Kids Consults

Ozone Therapy

• Ozonated Saline Drips

Marine Plasma

Prolotherapy Joint Repair

- Chronic low back, knee or rotator cuff injuries – old or new
- Permanent solution for all sporting injuries



Waipu Natural Health

3 Cove Road, Waipu 09 432 1325

Wednesdays 2pm - 6pm

Friday 10am-2pm • Saturday 10am-2pm

Ph 09 432 0854

Dr. Wayne McCarthy, ND

Unichem⁺

Orrs Pharmacy Ruakaka

Proud to Support our Community

- Prescription Services
- Professional Pharmacist Advice
- Medicine Management
- Passport Photos & Travel Advice
- Ear Piercing
- Podiatrist appointments
- Stockists of Revlon, Maybelline, Designer Brands Cosmetics
- Access to major cosmetic and fragrance brands e.g. Estee Lauder, Lancome, Clinique, Elizabeth Arden, Shiseido, Clarins

Town Centre, Ruakaka

Ph: (09) 432 7756

ruakaka@orrs.co.nz

We're open
Mon to Fri 9am - 5.30pm
Saturday 9am - 12.30pm



For professional advice on health and beauty

Unichem⁺
Orrs Pharmacy Ruakaka



Going once, going twice... Mangawhai residents and guests took a chance to bid for wine, art and even a ride on a Harley, to raise cash for a crucial cause.

Record amount raised to fight cancer

BY JULIA WADE

In keeping with the giving spirit often seen in Mangawhai and surrounding area, a recent series of fundraising events for a vital worthy cause has resulted in a record financial success.

Daffodil Week, August 26-31, saw a line-up of activities in Mangawhai including a pub quiz, high tea and auction, and street collection pull in more than \$14,000 for the Cancer Society of NZ.

Local organisers, Patti Bottomley and Paulette Phillis, say they are 'very thankful to the Man-

gawhai community' for their generosity.

'To start, 140 Mangawhai 'intelligentsia' made up 16 teams, put their brains to the test and had a whole lot of fun at the Mangawhai Tavern's Pub Quiz challenge while raising \$3000... a great success,' Paulette says. 'On Thursday Joanne and her team at The Club organised the amazing 'High Tea' which was made by the bowling ladies... and auction with 160 people attending which produced a successful fundraising result of over \$7000.'

Local 'auctioneers' John Phillis and John

Lambert energised the crowd to raise their hands for a diverse range of products including a breathtaking 1300-foot Bay of Islands parasail and a chance to ride pillion on a set of Harley Davidsons, setting off a bidding war among the thrill-seekers in the crowd.

Guest speaker, representative from the Puhoi to Warkworth Highway Jonathon Green delivered a presentation on the current progress of the project. Kaipara musician Jone Yelcich also provided entertainment along with raffles and a silent auction of an ex-

quisite handcrafted quilt made by local craft artist Maureen Lister, and two hand carved wooden chairs.

On the official Daffodil Day, August 31, a team of collectors including 'Daf and Dil', 'braved the inclement weather' and raised a further \$4000 to the total.

'We were humbled by the time given by collectors and generosity of so many who donated goods and services to the auctions and raffles,' Paulette says. 'Thank you all, it was great to work with an amazing group of people.'

POLICE SNIPPETS

Bike thief

Local police are urging residents to be more careful with their home and valuables following the latest crime spree to hit Mangawhai in recent weeks.

On August 27, an adult Maori male allegedly stole a child's bike and attempted to steal another outside Tau Lin takeaways in Mangawhai Village. After buying and eating hot chips outside the premises the thief then pedalled off on a purple mountain bike before returning for the second bike. However he was thwarted in his attempt after being spotted by the bike's young owner. Both bikes belong to the shop owner's children.



Know this man? The alleged thief who stole a child's bike and attempted to take another.

Street targeted

Jack Boyd Drive was the scene of three thefts in late August. A 2016 Holden Colorado utility wagon and women's wallet were stolen from two separate properties on August 28. The vehicle was found abandoned sometime later along with a paper trail of receipts from the thieves' spending spree using the stolen bankcards. The ute has since been returned to the owner.

Between August 26 and September 7, thieves jimmied open a ranchslider latch on a bach, before taking off with a 42-inch TV, telescope and tripod, glass coffee cups, four bottles of wine, two boxes of Panadol and \$25 in cash.

Occupants of a Pearson Street address were woken by their dogs on September 5 to find pieces of outdoor furniture moved around. The female occupant also says she saw a flatbed truck going up the driveway of a neighbouring property. However, the following morning the neighbours were unaware of the night time visit and reported nothing stolen.

More thefts, maybe linked

A laptop and charger of undisclosed description was stolen from a home office in Spinnaker Road on September

ber 6, after the perpetrator found access into the house.

New resident and single mother of three young children received an unfriendly welcome to the area when her bank cards were lifted from her car parked outside her home in a quiet street off Kagan road, on the night of September 7.

Even locked cars offer little protection against determined thieves. A black leather handbag containing an iPhone 7 in a red case, drivers licence, bank cards and Mangawhai Club membership, were taken outside the Village Four Square on September 10.

Mangawhai Constable Dale Wewege says police believe a number of the thefts are linked to the same group of people.

'We also believe they have come into the area from out of town, we're following several leads and everything is still under investigation presently,' he says. 'We want to advise the community to lock all doors on cars and houses and keep valuables out of sight and in a secure location.' Wewege also wants to encourage people to be more alert and report suspicious activity or unusual occurrences such as an open gate to a property that you know is not occupied.

'If possible, it is most important to get vehicle registration numbers as it makes our job a lot easier,' he says. 'Police want to hear from the community, you're not wasting our time by reporting things out of the ordinary. If you see anything suspicious, ring 111. Go with your gut instinct, if it doesn't feel right, it usually isn't.'

Bach surprise

A cleaner found an unexpected surprise on August 31, after discovering a Pearson Street bach they went to prepare had been temporarily lived in between August 28-30. Police say the bed had been slept in, the kitchen had evidence of meal preparation and toys were left scattered on the floor. A UE Boom blue tooth speaker was also missing from the property. 'It appears an adult and at least one child had spent a few days in the property,' Constable Wewege says. 'We would like to hear from anyone who knows anything about this incident.'

Murder charge

The tragic death of a 2-year-old girl at a Mangawhai Heads address on August 22 is still under CIB investigation and a 30-year-old man is due to appear in court charged with murder. The Focus wishes to express their deepest sympathy to the child's family.

- REPORTING / JULIA WADE

COMPOSITE JOINERY Ltd

- Vantage Aluminium
- Timber Joinery – Exterior & Interior
- New Homes, Renovations and Commercial Projects

Ph: 09 425 7510 Fax: 09 422 2011

www.compositejoinery.co.nz


Morris & Morris Funerals

Established over 60 years
Your local funeral director

Bev Jaques local agent

Male and Female staff available to
discuss all funeral arrangements
Pre-paid and pre-arrange funeral options

FREE CALL 0800 66 77 47
OR PH 09 431 2367

Mangawhai Books, Gifts & Post Centre

New Zealand Post

Puzzles • Games • Books • Stamps
Colour copying • Laminating • Faxing
Stationery • Gifts • Toys • Magazines
Souvenirs • Beach Toys

Open 7 Days • Ph 09 431 4302
Next to the ATM in Wood St
Mangawhai Heads

Kevin McDonald & Associates Lawyers

- Real estate law • Wills and trusts
- Business law • Farming and forestry

Call Ian Gibson on 027 276 3608

Or Kevin McDonald 09 486 6827

We can take care of all your travel needs:

- ✓ Accommodation
- ✓ Cruises
- ✓ Holiday Packages
- ✓ Travel Insurance
- ✓ Car Hire
- ✓ Flights
- ✓ Tours

For full terms & conditions see
flightcentre.co.nz/lowestairfareguarantee



Flight Centre Warkworth | 54 Queen Street
Call 09 422 3302 | 0800 29 27 59

FLIGHT CENTRE
Unbeatable

LOWEST AIRFARE GUARANTEE
We will beat available airfare quotes for flights departing from New Zealand or you fly free! Conditions apply.

Gardening with Gael McConachy



A few years ago Box carved out two terraces near the entrance of the Block and planted lovely curved rows of grapes. I planted japonicas on the bank between them and roses to the East above

the dam. These grapes have been difficult to manage. One row was too close to the bank and one row too close to the roses. They were planted before we bought the ride-on mower and the

Why I'm banking on begonias

distance between them only allowed for a hand mower. Once you have a ride-on, hand mowers are not viewed in quite the same way. That, plus the poor soil and the fate of those rows was sealed. Out they came leaving a sad bedraggled row of lonely japonicas.

The criteria for improving this garden was based entirely on the ride-on mower. The flat areas need to be left so that they can be mown but the japonicas needed company. My friend Marg had numerous ideas for planting along the base (viburnums, pseudopanax 'Cyril Watson' etc. I toyed with some more nikaus). "What about cistus?" I suggested.

"Don't they self-combust?" replied Marg.

I got out my book on Japanese planting and there was the perfect foil for the japonicas. Bedding begonias. An old fashioned plant that Google says has 'fallen from favour'. Their lovely bright flowers and fleshy leaves complement the stark architectural lines of the japonicas, yet producing similar shaped flowers.

What about bedding begonias? I WhatsApped Marg. No reply.

Did you get my message? No reply.

"Do you not like bedding begonias and don't know how to tell me?" I asked her when I saw her.

"I don't like bedding begonias," she said. "And I don't know how to tell you."

I will prove her wrong. I am covering the bank with bedding begonias in all shades of white, pink and red. Their foliage can differ too, green and bronze. So far I am half way along the bank and they are looking brilliant.

Begonia Semperflorans, also called wax or fibrous begonias, are small plants which form mounds no more than 10 to 15cm high, covered in bright waxy flowers with yellow centres. They can be treated as annuals or perennials. I already had some planted in a dry spot under some cherry trees where they have coped really well. I've transplanted them all to the bank for some instant show. Now is the time to take cuttings.

Take the shoots with-



Though they like a little shade, these wax or fibrous begonias are very drought tolerant.

out blooms and approximately two nodes and place them in potting mix. I watched a YouTube clip which used the leaves. They trimmed the sides of the leaves off and planted the base.

I think they will survive the bank because they are very drought tolerant. They survive the hot sun but prefer a little shade.

I was reconsidering

the nikaus when fellow gardener Sue called by and said that Benji and Laura of 'Forgotten Fruits' were having an end of season sale. We should go and look.

Here I found the perfect plants to be planted at the base of the bank. I bought a couple of plums. Their branches will give the begonias some shade mid summer. There is room

along the bank for more fruit trees and suddenly the garden has come together. I am looking out for the apricots that produce in warmer climates. 'Fitzroy' and 'Katy Cot' seem the most recommended varieties.

I am so pleased that the terraces are still going to produce. No longer grapes but a variety of stone fruits instead.

Expert to speak about threats and control of serious weeds

Weeds flourish throughout Northland and the Brynderwyns and Mangawhai are no exception. The Friends of the Brynderwyns Society has invited Jack Crow to speak on problem weeds and their management at its September AGM in Mangawhai.

Society Chair, Martina Tschirky, says Jack Crow is extremely well qualified to inform and advise on the subject with 40 years experience in biosecurity and weed and pest management. This included being Auckland Council's biosecurity manager for 11 years and a science manager for the Victorian Government.

Crow also wrote DOC's national weed control resource Weed Manager, and several books on plants. He served on the Northland Conservation Board and chaired The Friends of Matakoho-Limestone Island Society and the Northern Branch of Forest & Bird.

Some weeds are more serious than others and have the ability to smother, prevent seed germination and to displace significant native vegetation. They include for example, climbing asparagus, ginger, moth plant, woolly nightshade, privet and banana passionfruit. All are present in the local area.


"If you have a concern about a weed this is a great opportunity to learn from someone with vast experience and knowledge," says Tschirky. "It would be a bonus if Jack could tell us how to deal with the scourge of climbing asparagus which is rife throughout the MAZ recreation area. Its seeds are being carried everywhere and where it gains a hold it threatens the integrity of the Brynderwyn bush."


All are welcome to attend the meeting.

■ Friends of the Brynderwyns Society AGM, Domain Hall, Moir St, Mangawhai, 2.30pm, September 30.



Waste Disposal & Recycling Solutions





Transfer Stations
55 Lawrie Road, Snells Beach
141 Rustybrook Road, Wellsford
Kaiwaka/Mangawhai Road, Hakuru

Find out more about our services on our website
northlandwaste.co.nz - 09 425 8567

100% NZ OWNED & OPERATED

Tourism Minister awards Kaipara over \$480,000

The impact of tourism on Kaipara's infrastructure has recently been recognised in the recent round of grants distributed by Minister of Tourism Kelvin Davis from the Tourism Infrastructure Fund (TIF).

The projects approved for support were prioritised to improve the visitor experience for those turning left at the Brynderwyn's to see what the West Coast of Kaipara has to offer.

Matakohe Toilet and Footpath will refurbish the toilet block in the cemetery as well as connecting the Matakohe township to the cycleways to be finished alongside the Matakohe bridge replacement.

"Good things come in threes and we've scored a perfect hat-trick here," said Kaipara mayor Dr Jason Smith, who welcomed the funding from the TIF. "Adding these upgraded facilities to existing Kaipara ones is better than a Royal Flush."

The total cost of the projects identified is \$917,240 with the TIF providing \$486,684. The Council's share for each project varied, but in total Council is required to fund related resource and building consent costs.

Maungaturoto toilet block and carpark is a complete demolish and rebuild, based on a community-provided design, along with three car park spaces behind the block.

Bayley's Beach access boardwalk and toilet update is a boardwalk connecting the carpark to the existing toilets, with a façade refresh and maintenance with the boardwalk then continuing beyond to the beach.

It is expected, now that funding has been approved, the projects will start within the next calendar year.

Museum fundraiser winds back the clock

Historical exhibits telling tales of Mangawhai's rich and diverse humble beginnings were given flesh and voice recently as the local museum came to life.

Over 100 visitors attended Mangawhai Museum and Historical Society's (MMHS) 'Live night at the Museum' event on September 1, and appreciated the unique and personal touch in discovering the areas past and predecessors.

Dressed in attire from past eras, MMHS volunteers amused and engaged adults and children alike with stories about days gone by, including the hard labour of wash day and gum digging, enduring a two-day wait on Mangawhai Wharf to catch a boat to Auckland, enjoying bubbles and looking dapper at classy local parties, and relishing a cup of tea after a tiring train journey from Auckland

to enrol young daughters into Hakaru's finishing school. Children especially were delighted by catching someone 'inhabiting' the old out-house.

MMHS manager Emma Gray says feedback from both visitors and participating volunteers regarding the well-attended event was extremely favourable.

"Our history, fundraising and events committees who planned the event, were thrilled to be able to offer something for all ages. Many of our fundraising initiatives appeal to adults, so it was pleasing to see this draw in a new crowd," Gray says. "Everybody involved in the planning enjoyed themselves and customer responses were positive so we will certainly be looking at doing it again."

- WORDS & PHOTOS / JULIA WADE



"Everybody involved in the planning enjoyed themselves and customer responses were positive so we will certainly be looking at doing it again."



Helicopter hassle: Rules around consent unclear

BY JULIA WADE

Te Arai skies have been the scene of a year-long debate between two neighbouring properties involving the use and landing of helicopters, and has highlighted the question of the need of council consent when it comes to rural flying.

Exclusive golf resort Tara Iti regularly uses the machines to fly clients in and out by air along designated flight paths. However a bordering neighbour, local woman Shelley Williams, claims the helicopters are 'invasive', their route aligning too close to her boundary and landing only 20 metres away from her farm building. She says that over a six month period, including the last summer, a minimum of four helicopters flew over her property every day.

"They create considerable noise as they fly overhead... sometimes flying under tree height over my property or less than 50 metres above my boundary shack roof," Williams says. "I actually have a witness willing to state that in all the years they lived next to a British Air Force base, they never had any choppers fly as low and close to them as they experienced numerous times at my property."

Williams has contacted Tara Iti management several times in regards to the helicopters and has also referred her concerns and complaints to Kaipara District Council (KDC) and Auckland Council (AC),

only to be told from governing council AC, that Tara Iti does not hold a resource consent for the landing of helicopters.

"The council advised they had no record of an approved helipad adjacent to my boundary," she says. "They said Tara Iti can land up to six flights per year for agriculture purposes, instead they've sometimes had six flights per day. I even have a KDC councillor as a witness to the constant landings and take-offs."

Tara Iti general manager Matt Guzik says the club is well aware of the acoustics issue regarding helicopters and, as the machines operate within the rural noise level requirements, no resource consent is required.

"Managing the helicopter flights is something we put a lot of thought into and we apologise to anyone who is inconvenienced by them. We are very mindful of limiting the impact of flights and the flight-paths are carefully designed with that in mind," he says. "Resource consent is only required when rural environment noise standards are breached. The club carefully manages the level of helicopter activity to ensure compliance with those standards and, consequently, it does not need to apply for a consent."

Northland Aviation Ltd director Michael Chubb, who manages Whangarei Airport, says issues over the use of private helipads is a common one especially in affluent areas.

"Private operations on private land won't need a resource con-

sent but I seem to recall some areas have a 'one take off and one landing rule' permitted per day and only by the owner of the property, not commercial activity or a mate coming in as well," he says. "Noise is usually measured at the boundary... for helicopters up close it will be 75 possibly up to 95 decibels. Consider that anything above 75 will probably be considered harmful to hearing, not necessarily in a short duration but over time exposure."

There appears to be no straightforward answer as to whether or not flying and landing of helicopters in Northland rural areas would require a resource consent. According to KDC a consent would 'potentially' be required, depending on determining factors such as 'the purpose and frequency, the distance of the landing area and proposed flight paths from neighbouring dwellings and resulting noise'. Whangarei District Council (WDC) say the activity would have to comply with the WDC's district plan's noise and vibration limits or a resource consent for discretionary activity would be needed.

Despite repeated requests Te Arai's governing Auckland Council could not offer an answer to the question of Tara Iti requiring a resource consent to land helicopters.

However an AC spokesperson was able to say that the Auckland Unitary Plan states the take-off and landings of helicopters in rural zones are for the purposes of servicing rural land and must not exceed 'Ldn 50 decibels or 85dB LAFmax'



A helicopter bound for Tara Iti in the skies above a bordering neighbour's shed, has a local wondering about the need for council consent.

within the boundary of any bordering site.

"We aren't aware of any consents permitting helicopter trips to and from the golf course although a landing area may have been provided for emergency circumstances," she says. "There are specific rules surrounding noise limits with the

use of regular helicopter activity and the team suggests that any concerns about regular aircraft movement to and from the golf course should be lodged as a formal complaint and can be investigated."

* Ldn: Day-night equivalent level/noise indicator. LAFmax: A-weighted, fast, maximum, sound level.

Mike Pero



Kaiwaka - Lot 3 161 Ranganui Road

Country Charm

This spacious, circa 1950's stucco home sits on an easy contour approx. 2 1/2 hectare block. Here is a great opportunity to enjoy the country, live a healthy lifestyle and add further value as time allows. The house is original - high ceilings, large living/dining rooms, character features including a lovely fireplace and a big kitchen - north east facing to catch all day sun and to enjoy the wide rural views across neighbouring farmland. Offered for sale subject to issue of title. Call Alan now to arrange a time to view.

Web - mikepero.com/RX1660439

4 1 2 2

For Sale

\$ 697,500



Alan Corkin
021 906 901
alan.corkin@mikepero.com

Mike Pero - Mangawhai

Office - 09 431 5974



Kaiwaka - Lot 4 Ranganui Road

Just Look At The Views

If you are looking for a large bare block (3.5 hectares more or less), here it is. This elevated block offers a choice of building platforms from which to enjoy spectacular rural views. There is covenanted bush and enough grazing to run a couple of animals. It has been subdivided from the original house and land next door (approx. 2.5 hectares), which are also for sale for those wishing to own a larger block. Offered for sale subject to issue of title. Call Alan now to view.

Web - mikepero.com/RX1660524

For Sale

\$ 345,000



Alan Corkin
021 906 901
alan.corkin@mikepero.com

Mike Pero - Mangawhai

Office - 09 431 5974

Mike Pero - Mangawhai



Mangawhai - Lot 304 Hilltop Road

9.7 Hectare Lifestyle Property Mangawhai

Bare block 9.758 hectares (more or less) of prime farmland situated at the end of Hilltop Road, only a few minutes' drive from Mangawhai village. This property will be ideal for all the lifestyle options. The land is gently sloping in a north/westerly direction with views across the valley to the Brynderwyns. Fully fenced, power and telephone to the boundary. Sold subject to the vendor registering a covenant on the title indicating that no second-hand relocatable dwellings will be permitted to be erected on this property. Call Tim now to view.

Web - mikepero.com/RX1652310

For Sale

\$ 630,000 plus GST (if any)



Tim Brown
021 387 551
tim.brown@mikepero.com

Mike Pero - Mangawhai

Office - 09 431 5974

Mike Pero - Mangawhai

0800 000 525

www.mikepero.com

Mike Pero Real Estate Ltd. Licensed REAA (2008)

BAYLEYS



Mangawhai 114 Black Swamp Road

Yes, you CAN have it all!

Luxury, Location, Lifestyle.

Now is the time to reward yourself and enjoy the pleasures you love. The icing on the cake being income potential from the 2 bedroom loft and check out the subdivision potential from this 2.9 ha (7.5 acre) property! This stylish four bedroom family home is set back off the road and is an entertainer's dream with seamless indoor/outdoor flow from the north facing kitchen, dining and living areas with a covered in all weather BBQ area and cedar hot tub.

The only thing missing is you!

bayleys.co.nz/1151142

4 2 2 3 10

Tender (unless sold prior)

Closing 4pm, Tue 30 Oct 2018

198 Molesworth Dr, Mangawhai

View Sat/Sun 1-2pm

Christine Thomas 021 560 008

christine.thomas@bayleys.co.nz

Jan Hutcheson 021 655 558

jan.hutcheson@bayleys.co.nz

MACKYS REAL ESTATE LTD, BAYLEYS, LICENSED REAA 2008

Kaiwaka 205 Takahoa Drive

Run away to your own coastal haven

This property exhibits a special and individual character within a mystical spot of NZ coastline and is sure to leave an ever lasting impression on you.

Perfectly positioned to take in the amazing views and captivating sunsets along the shores of the Kaipara inlet, this immaculate four bedroom, three bathroom home is situated on 2.2 hectares in the unique gated community of Takahoa Bay.

bayleys.co.nz/1220967

4 2 3

Asking Price \$939,000

Keri Condon 027 474 9489

keri.condon@bayleys.co.nz

MACKYS REAL ESTATE LTD, BAYLEYS, LICENSED REAA 2008



Mangawhai Heads 24 Robert Street

4 2 2 2

Auction (unless sold prior) 1pm, Thu 20 Sep 2018

14 Florence Ave, Orewa

Robbie Robertson 021 95 97 98

robbie.robertson@bayleys.co.nz

MACKYS REAL ESTATE LTD, BAYLEYS, LICENSED UNDER THE REA ACT 2008

Final viewings - don't delay

If you are looking for a fabulous family home handy to the water, easy walk to the cafes, and just 700m to launch the boat this modern oasis is a must see. Built to work well for a couple or families, the spacious and light-filled living areas flow seamlessly to an inviting and private outdoor living area for relaxation or entertaining. Only 7 years old, extras include butler's pantry, gas fires and boat shed. Vendors heading south - be quick!

bayleys.co.nz/1151119



Mangawhai 1132 Kaiwaka Mangawhai Road

3 1 1

Asking Price \$495,000

Letitia Partridge 027 274 8779

letitia.partridge@bayleys.co.nz

Laureen Hayes 021 431 386

laureen.hayes@bayleys.co.nz

MACKYS REAL ESTATE LTD, BAYLEYS, LICENSED UNDER THE REA ACT 2008

Save me!

This cute 1940s cottage still retains plenty of charming features and with a little thought and a cash injection of your choice, could become a little stunner.

With options aplenty to make this little do-up a major done-up, we encourage you to call us today and take advantage of an affordable home in a rural setting, yet oh so close to great amenities.

bayleys.co.nz/1151131



Mangawhai Heads 48 Robert Hastie Drive

Asking Price \$495,000

Robbie Robertson 021 95 97 98

robbie.robertson@bayleys.co.nz

MACKYS REAL ESTATE LTD, BAYLEYS, LICENSED UNDER THE REA ACT 2008

Cream of the crop

Wow, not only do you get to enjoy all the privileges of being in The Sanctuary with shared tennis courts, two large lakes for non-motorised sports, an adventure playground and hikes through centuries old native bush, you also get the opportunity to secure what must be one of the prime sites in this quality development to build your lakeside holiday home or country estate.

With a north-east aspect, this near level 9262m² site offers plenty of room to create your own sanctuary within The Sanctuary and bounding the lake's edge it's even more appealing.

bayleys.co.nz/1151090

Mangawhai Heads 7 Sandpiper Lane



Asking Price \$295,000
Letitia Partridge 027 274 8779
Laureen Hayes 021 431 386

MACKYS REAL ESTATE LTD, BAYLEYS, LICENSED UNDER THE REA ACT 2008

House and land package option

Large 925m² flat section situated in a petit subdivision where the cul de sac creates a basin around which just a few elevated sites gather.

Plans for house and land package available to view.

bayleys.co.nz/1150845

Mangawhai Lot 13, 308-310 King Road



Asking Price \$379,000
Letitia Partridge 027 274 8779
Laureen Hayes 021 431 386

MACKYS REAL ESTATE LTD, BAYLEYS, LICENSED UNDER THE REA ACT 2008

For lifestyle lovers

Elevated lifestyle block of approx. 2.5 acres with stunning 360 degree views and an ideal building platform at the peak of the lot. Located in a boutique estate, home to just a select few properties.

bayleys.co.nz/1150962



Mangawhai 18 Kahu Drive

Near new modern home, gorgeous kitchen, open plan dining, living spaces. 3 double bedrooms, master with walk through wardrobe to ensuite. Decks for entertaining, internal double garage. Location is just a few minutes to Mangawhai Village shops & cafes.

For Sale \$715,000

View www.harcourts.co.nz/MH8856

Bruce Beale M 0800 223 457 P 09 431 4053

E bruce.beale@harcourts.co.nz

Target Realty Limited MREINZ Licensed Agent REAA 2008

Mangawhai 1/71 Moir Street Holiday Park

- MOTIVATED VENDOR
- 2 Bedrooms, 2 Bathrooms
- Share in facilities, Holiday Park Cond. Apply.
- Furniture included

For Sale \$345,000

View by appointment

www.harcourts.co.nz/MH8722

Ann Richards M 021707893 P 09 431 4053

E ann.richards@harcourts.co.nz

Target Realty Limited MREINZ Licensed Agent REAA 2008

Mangawhai Heads 11 Pohutukawa Place

Private & tucked away -yet close to all that is Magical Mangawhai. Holiday Rental Income potential or move in and enjoy. Entertainers delight - wonderfully relaxed coastal atmosphere. Opportunity is knocking - be sure to answer!

For Sale \$749,000

View www.harcourts.co.nz/MH8854

Susan Woodhead & Mike (Woody) Woodhead

M 027 625 5807 M 027 431 4313

Target Realty Limited MREINZ Licensed Agent REAA 2008

Mangawhai Heads 68b Jack Boyd Drive

Super modern, fresh & spacious living throughout. 4 dble bdrms, 2 bthrms, internal garaging, indoor/ outdoor all weather space to entertain. Super large flat section. Surf beach & shops a short drive away.

For Sale \$860,000

View by appointment

www.harcourts.co.nz/MH8846

Ken Davies & Lynne Pricor

M 027 272 7314 M 021 039 2768

Target Realty Limited MREINZ Licensed Agent REAA 2008

OPEN HOME



PRICE REDUCED



OPEN HOME



Mangawhai Heads 60 Moir Point Road

When size matters, our Home at 60 Moir Point Road certainly delivers. 4 Dble Bdrms - 2 Bth/rms - Triple Garaging/Workshop - 2 Lounges - 1470m2 section - northerly aspect. Seeing is Believing!

For Sale \$995,000

View O/Home - SAT @ 2.00PM.

www.harcourts.co.nz/MH8838

Susan Woodhead & Mike (Woody) Woodhead

M 027 625 5807 M 027 431 4313

Target Realty Limited MREINZ Licensed Agent REAA 2008

Mangawhai 23 Weka Street

Price reduced , vendor wants sold! 3 bdrms, 2 bthrm . Brand new, spacious living, modern throughout, decks & more ,internal dble garage. So handy to the shops & cafes . Great retiree pad or family living. Ring Ring !!

For Sale \$725,000

View by appointment

www.harcourts.co.nz/MH8832

Ken Davies & Lynne Pricor

M 027 272 7314 M 021 039 2768

Target Realty Limited MREINZ Licensed Agent REAA 2008

Mangawhai Heads 4 Bodan Lane

Absolute Show Stopper! Celebrate living in Mangawhai with this brand new, 3 bedroom contemporary residence. North - West orientation. the home is illuminated with light and sun.

For Sale \$850,000

View O/Home - Sat @ 1.00PM.

www.harcourts.co.nz/MH8842

Susan Woodhead & Mike (Woody) Woodhead

M 027 625 5807 M 027 431 4313

Target Realty Limited MREINZ Licensed Agent REAA 2008

Mangawhai Heads 21b Anchorage Road

Holiday living available now! 3 bdrms. combined dining, kitchen space, roomy lounge. Decks, flat section, single separate garage. Be in for summer, 3-4 mins to beach, walk ways, shops and more.

For Sale \$650,000

View by appointment

www.harcourts.co.nz/MH8864

Ken Davies & Lynne Pricor

M 027 272 7314 M 021 039 2768

Target Realty Limited MREINZ Licensed Agent REAA 2008



MANGAWHAI HEADS 54A JACK BOYD DRIVE

Superb GJ Gardner home situated on an established manicured 2918m2 level section. Modern living unfolds onto a large tiled wrap around tropical patio. Cosy living area has fireplace for cool evenings. 3 dbl brms, 2 bthrms. Dbl garage, int access, separate 3 bay garage with its own driveway. Resource consent to subdivide.

FOR SALE \$935,000

VIEWING By Appointment www.barfoot.co.nz/762638



Craig Matheson
027 218 4509
A/H 09 431 4798
c.matheson@barfoot.co.nz
Mangawhai 09 431 5960



MANGAWHAI HEADS 2 PARK AVENUE

This stylish, 3 dbl brm, 2 bthrm home on Park Ave is situated in the prestigious Parkview Waters. Across the road from the Horizon Club with pool and gym. Construction was completed by Westmoreland Homes to a high specification. This property is in a superb position if you want to call Mangawhai your home.

FOR SALE \$920,000

VIEWING By Appointment www.barfoot.co.nz/760025



Craig Matheson
027 218 4509
A/H 09 431 4798
c.matheson@barfoot.co.nz
Mangawhai 09 431 5960



MANGAWHAI HEADS 5 PARK AVENUE

Stylish 3 brm Westmoreland home, located in the exclusive Parkview Waters development. This is a desirable living location in a prestigious development which includes access to the Horizons Club, incorporating a boutique cinema, swimming pool & gym complex. The perfect place to unwind.

FOR SALE \$899,000 www.barfoot.co.nz/761063



Craig Matheson
027 218 4509
A/H 09 431 4798
c.matheson@barfoot.co.nz
Mangawhai 09 431 5960



MANGAWHAI HEADS 145B WINTLE STREET

Sunny, elevated and spread over two levels with wide breathtaking coastal views, this modern 3 brm, 2 bthrm beach house is a must see. Proudly positioned in the hills above the surf beach it takes advantage of the sun and fabulous ocean, island & harbour views in a very exclusive and sought after situation.

FOR SALE \$1,200,000

VIEWING By Appointment www.barfoot.co.nz/762178



Craig Matheson
027 218 4509
A/H 09 431 4798
c.matheson@barfoot.co.nz
Mangawhai 09 431 5960

Speed review for Tara Road

As a part of Council's programme of improved road safety on the network, Kaipara District Council is looking to reduce the speed limit around the Tara Road, Kaiwaka Mangawhai Road intersection.

The review area extends from Moir Street, at a point 280m west of Insley Street where the current 50kph to 70kph speed limit boundary is located, to a point on the Kaiwaka-Mangawhai Road, 300m to the west of the intersection with Tara Road.

The review area also includes Tara Road, from the intersection with Moir Street to a point 100m north of Darmah Lane.

The proposed lower speed limit will:

- Improve alignment with current and future land-uses in the area;
- Significantly increase pedestrian safety, particularly at new crossing points (to be installed still);
- Significantly lower the risk of serious injury crashes resulting from direct access onto the main carriageway.

Alongside the proposed change to speed is an update to Council's existing Speed By-law. The key changes to the bylaw include an updating of relevant legislation, and formatting changes to align the bylaw with other

Northland Councils.

"The safety of our residents is paramount, and as areas within our district become more urbanised, reducing speed limits helps to achieve this," says acting Kaipara District Council chief executive Curt Martin said.

A full summary of changes to the bylaw, along with the proposed speed change can be found on the Kaipara District Council website.

■ *Submissions are sought from any person or organisation and must be received by Council no later than 5pm on Monday 15 October 2018.*

Community invited to see SH1 plans

Safety improvement work is about to start on State Highway 1 (SH1) between Wellsford and Warkworth, through the Dome Valley.

Before work gets underway the community has an opportunity to view the plans for the road and talk to the project team.

The NZ Transport Agency Director of Regional Relationships, Steve Mutton, says most of the crashes involved people crossing the centreline and hitting an oncoming vehicle or running off the road and hitting roadside objects.

Between 2006 and 2015, 17 people died and 45 were seriously injured in crashes on the road between Wellsford and Warkworth.

"This stretch of SH1 is an important link between Northland and Auckland for communities, freight and visitors but its unexpected curves, poor visibility and steep slopes make it difficult for people to drive safely," Mr Mutton says.

"We've talked to the local communities and motorists about how we can make this road safer, and we're making these changes based on what they've told us and using our research."

The planned work includes safety barriers being installed to help stop head-on crashes, shoulders widened making it safer for motorists to pull over, and several intersections will be improved.

Because the route is 15km long with some challenging areas, it will be finished in five stages. Work is expected to start on stage one by the end of the month.

While the work is being done there will be some noise and inconvenience.

The Transport Agency will endeavour to minimise any travel disruption during construction.

The Safe Roads and Roadsides Programme is making around 1500km of state highway safer through measures such as rumble strips, shoulder widening, safety barriers and better signage to reduce deaths and serious injuries on rural state highways.

The Transport Agency works with stakeholders and local communities to find safety solutions that will make a difference.

"Mistakes will still happen, but if our roads and roadsides can be made safer, there will be less death and injuries," says Mr Mutton.

Motorists can stay up to date and check road closures and weather conditions at nzta.govt.nz/traffic or by calling 0800 4 HIGHWAYS (0800 44 44 49).

TIME OUT

Answers on page 18

SCRATCH PAD

SUDOKU

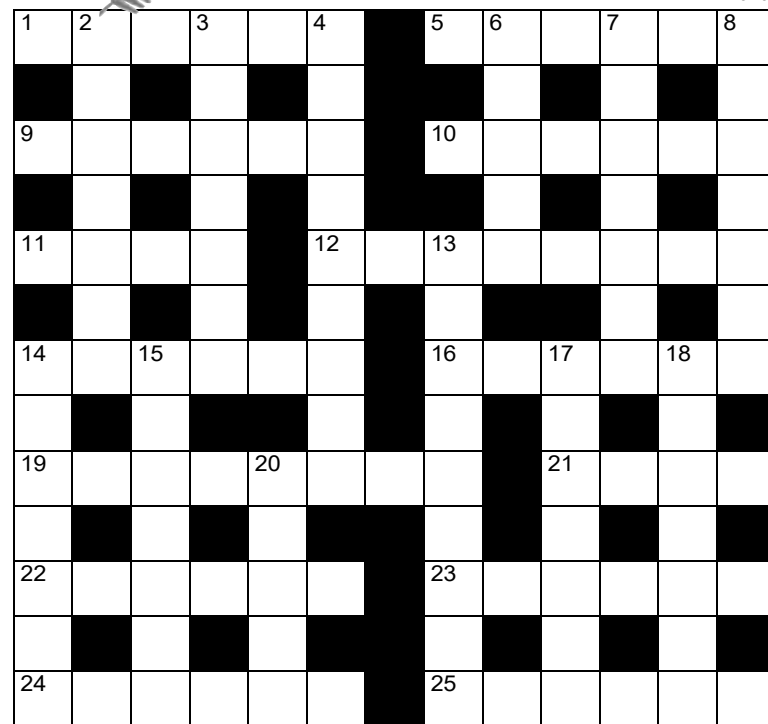
Fill the grid so that every row, every column and every 3x3 box contains the digits 1 to 9.

				2		7		3
9				1	6	8		
1		4		8			9	
			8					5
		8				6		
4					7			
	4			7		1		2
		6	1	9				7
5		1	4					

258

THE NZ CROSSWORD

1676



©THE PUZZLE COMPANY

ACROSS

1. Valiant (6)
5. Money lender (6)
- 9/10. One of Peter Jackson's *Lord of the Rings* films (3,3,6)
11. Suspended (4)
12. Run wildly, especially animals (8)
14. Lines of poetry (6)
16. Corkscrew (6)
- 19/21. Former international rugby ground, last used in 1999 (8,4)
22. Figure (6)
23. Poorly (6)
24. First-born (6)
25. Cricket team (6)

DOWN

2. Tire out (7)
3. Dunedin landmark (7)
4. French roll (9)
6. Tempest (5)
7. Animals introduced to New Zealand in the 1850s (3,4)
8. New Zealand's first permanent European settlement (7)
13. Connect (9)
14. Bush shirt (colloq) (7)
15. Deeply embarrassed (7)
17. Sudden urge (7)
18. Put into order (7)
20. 50/50 (5)

Events planned

- **Wellsford Community Centre**, 3pm to 7pm, Tuesday September 18
- **Warkworth Masonic Hall**, 3pm to 7pm, Thursday September 20
- **Countdown Warkworth**, 11am to 2pm, Saturday September 22



Trade & Service Directory



Serving and Protecting our Community for over 15 Years

insite
SECURITY & INVESTIGATION

DOMESTIC & COMMERCIAL

- New Alarms - Design, Install & Service
- CCTV - Design, Install & Service
- Panic Alarms
- Fire Alarm Systems
- Access Control Systems
- Alarm Monitoring
- Rapid Response 24/7
- Premise Patrols
- Lockup Checks

FOR ALL YOUR SECURITY NEEDS!

Contact Insite for your **FREE SECURITY appraisal.**

0800 66 24 24
www.insitesecurity.co.nz

mangawhai plumbing
COMPANY

Kevin (Scotty) and Tracey Scott

Plumbing • Drainage • Water Tanks • Pumps
Roofing and Guttering • Fire Places • New Houses

PO Box 26, Mangawhai • Fax 09 431 5281
Ph: 09 431 4232 • Mobile: 0274 727 800

Barry Curtis
PLUMBING LTD

REGISTERED CRAFTSMAN PLUMBER

Plumbing, Maintenance, Alterations
New Housing, Roofing & Spouting

PH: 09 431 5572/Mob: 027 257 9884
MANGAWHAI

Prompt Efficient Service Guaranteed
25 YEARS EXPERIENCE

JC Repairs Bream Bay John Owner/Operator
021 154 8801

10% DISCOUNT FOR NEW CLIENTS

- Interior Exterior Renovations & Repairs
- Decks, Fence, Retaining & Minor Earthworks

jcrepairsbreambay@gmail.com **SEE OUR FACEBOOK PAGE**

WATER
Prompt and reliable service
09 431 5571
027 287 0922

'QUALITY ASSURED'

MANGAWHAI
Well Drilling & Water Ltd



Trade & Service Directory



- Kitchens
- Storage cupboards
- Custom pieces
- Any cabinetry to suit your needs



Jake Hill 0274 449 206
Prime.design22@gmail.com



Quality,
affordable,
transportable
homes; factory
built for you.

0800 435 800
www.sunshinehomes.co.nz

MASON CONTAINERS LIMITED



- | Container Sales
- | Container Hire
- | Self Storage
- | Hiab Cartage

0800 833 323

Visit to view containers at 76 Hudson Road, Warkworth
admin@masoncontainers.co.nz | masoncontainers.co.nz

DIGGER ★ TRUCK ★ TRACTOR

EXPERIENCED OPERATORS

For all domestic, farming
and commercial needs

RUSSELL 0274 755 555



REPAIRS AND MAINTENANCE ON PROPERTY AND HOUSES
KITCHENS | BATHROOMS | FLOORING | TREE/HEDGE TRIMMING

Graeme Newman | Handyman
Phone 022 358 8680
Email repairservicesltd@gmail.com



NEW HOMES / ADDITIONS

Contact Jaffa Built Ltd
Jeff Turner 021 445 526 / e: jaffa@jaffabuilt.co.nz

CREATING THE INDOORS - OUTDOORS

THE OUTSIDER
Aluminum Awning System

99% UV
Protection

Engineered
for very high
wind zones

5 YEAR
Warranty

Call for an obligation free design, measure and quote

SHADES DIRECT

Phone 0800 SHADES or 0800 742 337 / 021 2742337 or visit www.shadesdirect.co.nz



P 0223516679 or 0212884456 E mangawhaidigital@gmail.com

Freeview • Satellite Dishes • TV Aerials
Multi Room TV • Audio • Home Theatre

Diggerworks LTD

Years of local contracting experience

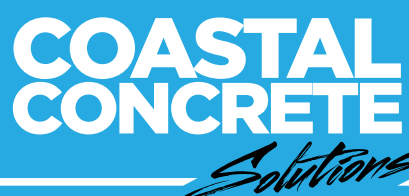
- Siteworks
- Driveways
- Feature rock walls, ponds and dams
- Embankments
- Auger to 5m
- Trenching with 300 and 400 spades
- Subdivisions to Council spec's
- Bobcat available for finishing work

Call Harrie on 021 343 473



Building Services • New Homes
Renovations • Earthworks & Landscaping

021 114 0827
luke@lshconstruction.co.nz
www.lshconstruction.co.nz



0274 4 A POUR | 0274 427 687
coastalconcretesolutions.co.nz
anthony@coastalconcretesolutions.co.nz

- Floor Slabs
- Driveways
- Right-of-ways
- Carparks
- Patios
- Exposed Aggregate
- Coloured Concrete

COAST TO COAST TREEWORKS

ALL ASPECTS
OF TREEWORK

PHONE VICTOR

021 050 2665

victorvanleeuwen@hotmail.com

Lifestyle Mowing & Maintenance

Pete Wilson

021 231 8169

LIFESTYLE BLOCKS • SUB-DIVISIONS • SECTIONS
Pasture Topping • Slashing • Mulching
Parks & Reserves • 4WD Ride-on-mowers

TRACTOR MOWING COMPANY



Tim & Sharlene Lord

- Pest Control
- Carpets & Upholstery
- Interior and Exterior Home Cleaning

e-mail - kaiparacleaningco@farmside.co.nz
Facebook - www.facebook.com/kaiparacleaningco

Phone 021 114 6729
www.kaiparacleaningco.co.nz



LIFESTYLE BLOCK SERVICES

Contact Mark on 021 801 065
or Contact Lisa on 021 108 1057

Small Hay/Silage Baling & Wrapping • Fencing • Spraying
Mulching • Stockwork • Stock Water Systems
Driveway & Track Maintenance • Tree Trimming

Mangawhai Diggers and Drainage

20 YEARS EXPERIENCE



Registered Drainlayer
Sewerage Treatment Plants
New/existing homes
Concrete Water Tanks
Demolition and Clean-ups
Hole boring & Laser levelling
House sites & Driveways

Phone 09 4315033 or
Mobile 027 273 1699



Your local Drainage Specialists

- ✦ Domestic Drainage
- ✦ Septic Tanks & Effluent Fields
- ✦ Secondary Treatment Systems
- ✦ Stormwater / Watertanks
- ✦ CCTV Drain Camera
- ✦ 3.5 Tonne & 1.8 Tonne Excavator

Mark Wharfe
Certifying Drainlayer
Mob: 0274 778 678
Ph/Fax: 09 4314907
mark@markirdrainage.co.nz

Storage Mangawhai

Secure site with full size containers
for storage and lock up.
Short or long term lease.

Phone Jeannette 021 158 9773
e-mail: store@storagemangawhai.co.nz



DIGGERS TRUCKS BOBCATS

0 2 1 7 1 1 7 7 5

www.mangawhaibobcats.co.nz



PH 0274 855 738

190 Molesworth Drive
Mangawhai Heads
gary@mub.co.nz

AGENT FOR
blindworks
the best in blinds

Residents win rights to manage park



Change is in the air. Mangawhai Holiday Park residents gather by their pool – ‘a victim of the Park’s troubled past year’. However new plans are in place for ‘a summer recommissioning’ Park resident Carolyn Dymock says.

BY JULIA WADE

Following the recent management breakdown of a long-running holiday park, a happy ending is at hand with the park tenants now in control. Residents of Mangawhai Holiday Park on Moir Street have been in a ‘jubilant mood’ since securing the management rights to the complex in late August. Carolyn Dymock – Park resident for two years and treasurer of the Park’s society EUO – says she is delighted. “The society, through its committee, has been running the park for most of the past year and now, by raising sufficient funds among ourselves to put in the winning bid we’ll be

officially in charge!” she says. “The whole park had a meeting and BBQ in the gazebo and pool area on September 8 to celebrate. We also had a practice celebration on September 3 when we found out we had won the rights so we are getting quite good at it.” Former managers of the Park, Mangawhai Management Ltd (MML) were registered in 2008 to administer the holiday grounds but was placed into liquidation on June 8 this year by the High Court. The management rights were put up for public tender in July (Focus, August 6). “A series of events began more than a year ago when MML raised our levies by an amount far in excess of an

agreed ten percent annual increase,” Dymock says. “Our society asked for an analysis of the rise and when that wasn’t supplied, we capped our contributions to 60 per cent of the previous year’s levy. This led to MML claiming they had insufficient funds to manage the park and were unable to pay the managers. In turn, the managers took legal action which led to the court ruling.” Sites at the Park are owned independently by the residents who also each hold a share in the land and, for many, the grounds have also been a full-time home for more than ten years. “We were faced with the risk of someone else buying the rights and upping the lev-

ies yet again or buying the management rights ourselves,” Dymock says. “The sale went through on Friday September 14... it’s a great win for us.”

JUST CLARIFYING...

Just clarifying a point made in an editorial in our August 6 edition, ‘Unknown future for troubled campground’. Former Mangawhai Holiday Park managers D&N Management Ltd confirm they did not ‘walk off the job’ despite no payment for months, but saw out the term of their contract before leaving.

Community Grants Committee shares \$100,000 of funding

Kaipara District Council’s Community Grants Committee (CGC) has awarded \$100,000 to community organisations across the district at its August 23 meeting. CGC chair Anna Curnow was delighted with the variety and breadth of applications. “A total of 37 organisations from the east through to the west applied for various amounts of funding through the Community Grants fund. This year there was a total of \$100,000 available. Curnow said it was a real honour to be in the position to help many organisations to achieve their goals. “We do not make these decisions lightly. I would like to thank all those organisations that make applications to us for assistance to continue their work in our communities. Council’s vision is to build thriving communities working together and these groups are key in delivering that vision.” Grants ranged in size from \$438 for the Northern Wairoa Genealogy Society for operating costs, right up to \$13,680 to go towards the Maungaturoto Residents’ Association for the construction of a Children’s Bike Track on the View Street Reserve, incorporating road signage and marking to help educate young people on road safety and awareness. Closer to home, local awards were made to Hakaaru Community Hall & Domain Society Inc \$2454.91, Kaiwaka War Memorial hall \$7000, Mangawhai Activity Zone Charitable Trust \$750, Mangawhai Museum & Historical Society Inc \$1649.15, and Maungaturoto Library \$1646.40. The full list of awards is available for viewing on the Kaipara District Council website kaipara.govt.nz.

PUZZLE SOLUTIONS

FROM PAGE 16

SOLUTION Across: 1. Heroic, 5. Usurer, 9/10. The Two Towers, 11. Hung, 12. Stampede, 14. Stanza, 16. Spiral, 19/21. Athletic Park, 22. Number, 23. Ailing, 24. Eldest, 25. Eleven. Down: 2. Exhaust, 3. Octagon, 4. Croissant, 6. Storm, 7. Roe deer, 8. Russell, 13. Associate, 14. Swannie, 15. Ashamed, 17. Impulse, 18. Arrange, 20. Evens.

8	6	5	4	2	9	7	1	3
9	3	7	5	1	6	8	2	4
1	2	4	7	8	3	5	9	6
6	9	2	8	3	1	4	7	5
7	1	8	2	5	4	6	3	9
4	5	3	9	6	7	2	8	1
3	4	9	6	7	8	1	5	2
2	8	6	1	9	5	3	4	7
5	7	1	3	4	2	9	6	8

Mangawhai Community Directory

URGENT NUMBERS

Ambulance, Fire & Police111
Mangawhai Police (non-urgent calls)..... 09 423 1060
Northpower 09 431 8228
(Faults & Breakdowns)0800 104 040
KDC Help Desk0800 727 059
NRC Kaipara Rep Graham Ramsey
..... 09 439 7022 or 021 829 596
Dog, Stock & Noise Control.....0800 105 890
Bird Rescue09 438 1457
Orca Watch.....0800 733 6722
Environmental Hotline0800 504 639
Whale & Dolphin Stranding0800 733 6722
Harbour Warden (also for strandings)..... 09 431 4277

CIVIL EMERGENCY

Meeting area: Christian Youth Camp,
North Ave, Mangawhai Heads

DOCTORS & HEALTH

Coast to Coast Health Care 09 431 4128
or After Hours 09 423 8086
Mangawhai Dental..... 09 431 5884
Wellsford Dental 09 423 8017

RUBBISH COLLECTION

Authorised KDC rubbish collection is by prepaid
\$3 blue bag only; bags are available at Wood St Four
Square and Council Office at Mangawhai. \$3.20 at
the Village Four Square. Collection is every Monday.
Stickers on other bags will not be acceptable as
Kaurilands (who provide blue bags) is Council’s
legitimate collector.

CHURCHES

Anglican Church of Christ the King..... 09 431 4758
Baptist Church..... 09 431 2339
CauseWay Church..... 09 431 4782
Mangawhai Domain Bible Study..... 0212 525 331
St Mary’s Catholic Parish..... 09 423 8170

SCHOOLS

Beforesex Early Education Child Centre... 09 431 4012
Mangawhai Beach Primary School..... 09 431 4385
Mangawhai Mainly Music..... 09 431 4778
Mangawhai Kindergarten..... 09 431 4333

COMMUNITY CENTRES

Mangawhai Domain 09 431 4752
Mangawhai Library Hall..... 09 431 3027
Mangawhai Recreation Centre
School term time 09 431 4385
Holidays..... 09 431 4660
Senior Citizens Hall 09 431 5053

SPORTS CLUBS

Hakaru Pony Club 09 431 5255
Mangawhai Badminton Club..... 09 431 4807
Mangawhai Bowls Inc 09 431 5085
Mangawhai Dog Training..... 09 431 4428
Mangawhai Indoor Bowls Club 09 431 3254
Mangawhai Table Tennis..... 09 431 4450
Mangawhai Tennis Club..... 09 431 4543
Mangawhai Club Inc..... 09 431 5085
Mangawhai Golf Club 09 431 4807
Mangawhai Surf Club 09 431 4679
Mangawhai Fishing Club..... 09 431 5385
Mangawhai Floral Art Group..... 09 431 5215
Indoor Soccer 09 431 4405

Netball 09 431 4303
Soccer Club 09 431 4752
Table Tennis Club 09 431 4874
Kaiwaka Sports Complex..... 09 4312 051

SOCIETIES & GROUPS

Domain Society..... 09 431 4428
Donkey Society..... 09 431 4711
Grey Power..... 09 431 7778
Harbour Restoration Society..... 09 431 4813
Mangawhai Artists Gallery..... 09 431 3247
Mangawhai Bridge Club..... 09 431 3247
Mangawhai Garden Club 09 431 5834
Mangawhai Museum & Historical Soc 09 431 4645
Mangawhai Ratepayers & Residents Assn 09 431 5161
Mangawhai Zonta..... 021 528 170
NZ Society of Authors, Nth Branch 09 431 8266
Returned Services Assoc. 09 431 2176
Senior Citizens..... 09 431 5430
Scouts 09 431 5380
Probus Club 09 431 4758
Te Whai Community Trust 02 0247 8003

JUSTICES OF THE PEACE

Gail Leabourn..... 09 431 4526
Jim Wintle 09 431 4766
John Phillis 09 431 4850
Judith Gamble..... 09 423 7084
Richard Bull 09 431 4813
Mark Farnsworth 09 431 5438
Des Cogan 09 431 4546
Lenore Donaldson..... 09 431 2228
Tony Hargreaves..... 09 431 2045
Wendy Howard 09 431 2725
Cilla Kaiser 09 431 3216
Lindsay McCaw..... 09 431 3460
Richard Te Haara..... 09 431 4552
Adrian Tracz..... 09 902 2083

MARRIAGE CELEBRANTS

Daniel Twinn 09 431 3073
John Phillis 09 431 4850
Judith Gamble..... 09 423 7084
Lenore Donaldson..... 09 431 2228

SUPPORT

AA 09 431 5543, 09 431 2228, 0800 2296757
Alanon 09 431 2228
St John 09 431 5283
Plunket 09 431 8187 or 025 229 3312
Citizens Advice Bureau 0800 367 222
Gambling Helpline, 24 hours..... 0800 654 655
Mangawhai Cemetery 021 620 815
Mental Health Services 09 431 4101
R S A Welfare Officer 09 431 5034
Family Support Services..... 09 431 2661
Victim Support..... 025 847 297
Work & Income NZ..... 0800 559 009
SOS Rape Crisis..... 09 439 6070
Focus Driving Instruction..... 027 697 8824

MANGAWHAI PROMOTION

Information Centre..... 09 431 5090
Mangawhai Business Development Assn 021 982 549
..... www.mangawhai.co.nz

BEACHES

THE ESTUARY - The estuary is safe for swimming. Watch
for outgoing tide near harbour mouth.
OCEAN BEACH - Mangawhai Heads. Surf patrol & flags
in season. Toilets, change rooms.
PACIFIC BEACH - Take the first road left past the school.
EYRES POINT - A few kilometres past Pacific Beach turn
off. BBQ and picnic table.
TE ARAI POINT - North end of Pakiri Beach.
Safest unpatrolled beach.

MANGAWHAI FOCUS CLASSIFIEDS

FREE CLASSIFIED ads. Got stuff to sell??
FREE Classified FOR SALE ADVERT in the MANGAWHAI FOCUS.

Just a few small rules: Private/householders may run up to two 12 word For Sale adverts per issue.
Home Traders & Businesses must pay going rates. Email your adverts to: info@mangawhaifocus.co.nz.

PUBLIC NOTICES

Wellsford Plus invites new membership *Wellsford is looking towards the future.*

A newly formed group is working towards greater prominence and business awareness of the town under the banner Wellsford Plus Incorporated, formerly known as the Wellsford Promotions Association.

Because of its State Highway 1 location Wellsford has always had high traffic flow but not always reaped the benefits of increasing population or trade and industry. With the northerly spread of the Auckland population Wellsford is becoming more attractive for home buyers and this new promotions group is actively promoting businesses, clubs and events to stimulate greater community involvement.

The ultimate aim is to lobby Council and Government agencies for funding of essential amenities and utilities such as parks and reserves, streetscapes, footpaths and resealing.

Wellsford Plus invite membership from individuals, businesses or clubs interested in being an active part of, and growing a prosperous community.

Wellsford Plus Incorporated is president David Hodge 027 529 8260; vice president Karen Lennon 027 424 8325; secretary Melissa Wallace 021 077 2762; treasurer Col Minton 021 105 0522.

Want to be involved? Call any of the above or email wellsfordplus@gmail.com

Kaipara District Council proposed amendments to Kaipara Speed Limits Bylaw 2005

Kaipara District Council is amending its Speed Limits Bylaw.

Kaipara District Council is updating part of the Speed Limits Bylaw to ensure consistency with current legislation; provide greater clarity as to the Act that the bylaw is made under; and to ensure consistency with other Speed Limit Bylaws that are operative in Northland.

In addition, Kaipara District Council is proposing changes to the current posted speed limit on a part of Moir Street; and approximately 300m of Kaiwaka-Mangawhai Road; and Tara Road, from the Moir Street intersection to Darmah Lane.

The proposed amendments to the Bylaw and associated information can be viewed from 17 September 2018 on Council's website www.kaipara.govt.nz/haveyoursay

Further information can also be obtained from Council offices in Mangawhai at The Hub, 6 Molesworth Drive; or in Dargaville at 42 Hokianga Street; or requested by phoning 0800 727 059, or emailing speedreview@kdc.govt.nz

Anyone can make a submission on any aspect of the proposed amendments to the Bylaw. An opportunity to present your views on the proposed amendments will be provided. **Submissions must be received by Council no later than 5pm Monday 15 October 2018.**

Submitters wishing to attend a public meeting to further discuss their submission will be advised of the location and time of that meeting.

Curt Martin, Chief Executive (acting)

FRIENDS OF THE BRYNDERWYNS SOCIETY

NOTICE OF ANNUAL GENERAL MEETING

Sunday 30 September 2018, 2.30pm
Domain Hall, Moir Street, Mangawhai

Confirmation of Minutes of 2017 AGM
Chair's report & financial statements
Election of officers & general business

*Followed by JACK CRAW
expert in biosecurity, weed and pest
management, speaking about:*

**The threats posed by plant pests
to the Brynderwyns native bush**

Learn about invasive problem weeds in the bush and around Mangawhai and how to combat them

All welcome

Enquiries: Martina: Tel. 09 431 5161
flowerpowernorthland@gmail.com

MANGAWHAI COUPLE WANTED

Who spent Summer in Wanaka, dined at Relishes and shared our table one sunny day. Could you please contact me on 03 425 8828 or 027 926 8559

Public notice of application for on-licence, BYO on-licence, Sale and Supply of Alcohol Act 2012

Full name of the licence holder: *Hogs & Classics 2018 Ltd.* Address: *2753 State Highway 1, RD2, Maungataroto.* Occupation: Director has made application to the Kaipara District Licensing Committee 42 Hokianga Road, Dargaville for the issue of an: *On-Licence*. In respect of the premises situated at: *Highway Cafe*. The general nature of the business to be conducted under the licence is: *Cafe/Bar/Restaurant*. The days on which and the hours during which alcohol is intended to be sold under the licence are: *Monday - Sunday, 8am - 10pm*.

The application may be inspected during ordinary office hours at the office of the Kaipara District Licensing Committee at 42 Hokianga Road, Dargaville or Unit 13, 6 Molesworth Drive, Mangawhai Village or 2753 State Highway 1, RD2, Brynderwyn, Maungataroto. Any person who is entitled to object and who wishes to object to the issue of the licence may, not later than 15 working days after the date of the publication of this notice, file a notice in writing of the objection with the Secretary of the District Licensing Committee at: Kaipara Council Mangawhai or Private Bag 1001, Dargaville.

No objection to the issue of a licence may be made in relation to a matter other than a matter specified in section 105(1) of the Sale and Supply of Alcohol Act 2012.

Section 39 Notices also to be displayed on premise

A copy of an application to which regulation 36, 37, or 38 applies must be displayed:

(a) on the premises to which it relates, in a place (whether inside or outside the premises) where it can conveniently be read by a person outside the premises.

(b) for at least 10 days after a copy was first published (in accordance with these regulations) in a newspaper or on an internet site.



NORTHLAND
CIVIL DEFENCE
EMERGENCY MANAGEMENT
GROUP

TSUNAMI SIREN TESTING

Northland's network of tsunami sirens in coastal communities will be tested on the morning of Sunday, 30 September 2018.

Please note the new time. The sirens will sound twice: at 10am for 10 minutes, and at 10.30am for 30 seconds.

The twice-yearly checks are carried out at the beginning and end of daylight saving. A message will also be sent to users of the free Red Cross Hazard app.

For further information, go to
www.nrc.govt.nz/tsunamisirens

PlaceMakers

PLACEMAKERS MANGAWHAI

PlaceMakers Mangawhai is looking for a part time person who is extremely passionate about providing our customers with world class service every day and being a part of a business that's growing rapidly.

We're on a mission to find the best of the best and continue on our path of developing a team culture that's like no other.

We are looking for someone who...

- Can provide service with a smile
- Has an understanding of the building industry or building related products
- Can play full out and enjoys a fun working environment
- Can think on their feet and provide solutions for our customers
- Is a team player with a solid work ethic

You will be joining our Trade Counter/Yard and Drivethru team and will be provided with excellent training to help you become the best you can be.

This is a part time roll which includes Mondays, Fridays and Saturdays.
Please make application to: Lathem.broadstock@placemakers.co.nz

FOR SALE

BATHROOM TAPS 4 sets, cream, pink, green, all new \$60. Ph 09 432 7855.

BATHROOM TAP basin mixer, chrome, still in box, incl all fittings, \$40. Ph 021 678 358.

BOWMAC B78 framing brackets, cancelled project, cost \$24, sell \$10. Ph 09 432 7855

DRUM KIT Not new but working well \$25. Ph 0210 305 632.

GARDEN BLOWER/VAC with bag, Black & Decker \$30. Ph 09 432 1220.

KUMARAS, red/orange, gd quality, cheaper in bulk, call 34 Marsden Pt Rd, Ruakaka or ph 431 5771.

MOTORBIKE HELMET & GLOVES Leather boots size 10-11. Leather gloves. Offers. Ph 0211 708 645.

NEC PROJECTOR \$70. Ph 0211 708 645.

MOWAC stainless blade, size 9.8 x 1x26 teeth, cost \$56 new, sell \$40. Ph 09 432 7855.

POUFFES New \$20 each, made from recycled tyres. Ph 0210 305 632.

QUEEN BED is not assembled and two or three bolts need replacement \$40. Ph 0210 305 632.

SHOPPING BAGS New, denim, handmade, 2 sizes, \$15 & \$20. 0210 305 632.

TV Samsung 26" digital, flat screen, excellent picture, goes well. \$55. 09 432 7570.

TV ANTENNA Terrestrial UHF, Matchmaster High Gain powered. Value @ \$145. Ph 021 998 564.

TELESCOPE Sportsmaster, 30x90=60mm, adjustable tripod, zoom, \$145. 021 998 564.

JUMPERS Baby & Toddlers hand knitted \$20. Ph 4312 909.

LOCAL BUSINESS FOR SALE



2 fully equipped Café & Real Fruit Ice Cream Vans

Solar/electric (no humming motors). Zippys is an established name in Bream Bay operating at:

- Lang's Beach
- Waipu ITM
- Uretiti DoC Camp Ground on SH1
- Local Events and Private Functions

Vans, Stock, List of all Contacts and Full Training given. Asking price \$120,000 inclusive or owners would consider selling vans separately. Check it out: www.zippys.co.nz / facebook: zippysmobilecafe. Trademe #:1645211151 Contact: pg@zippys.co.nz

Mangawhai Museum Presents

Classical Masters

Guest Artists:

Fiona Bygrave BMus.ATCL.AIRMT

Nadine Hidalgo

Brian Becroft

Sunday 30th September

4.30pm

Tickets \$20

available from the Museum

or online

www.mangawhai-museum.org.nz/whats-on



EXPRESSIONS OF INTEREST REQUIRED

We are planning another tour to
Rarotonga 1st – 8th June 2019

We have a new itinerary. Phone
LEABOURN PASSENGER SERVICE

PHONE (09) 423 7416



Laundry Assistants

Tara Iti Golf Club is a private luxury golf resort based in Mangawhai.

The Club is looking for two Laundry Assistants (one part time and one full time) to assist our very busy laundry. A successful candidate will have experience and knowledge of laundry and cleaning equipment along with confidence in caring for luxury fabrics. This is a seasonal position. Candidates must be flexible to work shifts including evenings, weekends and public holidays. Ideal candidates would currently live locally or be willing to relocate to Mangawhai. Candidates must be eligible to work in NZ. Renumeration and staff benefits will be discussed upon successful application.

Apply by email with your CV and covering letter to administration@taraiti.com

KAIPARA SPOTLIGHT



Free junior library membership is available at all Kaipara Libraries for under 16s. Join online or pop into Dargaville, Maungaturoto, Kaiwaka or Mangawhai library. You'll get free access to all our collections including Encyclopedia Britannica online, eBooks, audioBooks and online magazines. You will be able to choose and reserve books from any of the libraries online and get pick up at your local library.



Alcohol Bylaw Review 2018

Council is consulting on the draft Alcohol Control Bylaw.

Changes to the legislation that governs how Councils make Alcohol Control Bylaws require the Kaipara district Council to replace our existing bylaw with a new one by December 2018.

These alcohol control areas (also known as alcohol bans) are designed to create safe public spaces. They are usually introduced because of concern about disorderly behaviour and criminal offending linked to the consumption of alcohol in certain areas.

New legislation passed in 2012 means that to create any new alcohol control areas, councils must have strong evidence that the consumption of alcohol in a public place is contributing to a high level of crime and disorder in that location. The definition of a public place for alcohol control areas has also been broadened and can now apply to public places, such as school playgrounds or supermarket carparks. Council must also be able to justify retaining existing control areas through good feedback from the NZ Police and our communities.

Further information, and online feedback forms can be found on Council's website. All feedback must be received by Council no later than 4.30pm Friday 28 September 2018.

Roading Monthly Report

Area specific works completed during August include:

- Water table restoration - Girls High School Road (ongoing), and Porter Roads
- Mechanised Tree Pruning - Ararua, Poyner, Kellys Bay (incl North & South), Birch and Cartwright Roads
- Culvert Replacement - Wairere, Phillips and Lusk Roads
- Spraying - Gorge Road unsealed footpath
- Unsealed pavement repairs - Lusk Road
- Overslip removal - Kai Iwi Lakes, Cole and Kirikopuni Valley Roads

Area specific works planned during September include:

- Routine bridge and structure maintenance, drainage clearance work, pothole repair and grading throughout the district
- Water table restoration - Girls High School, Omana, Doctors Hill, Tara, Cames and Kirikopuni Valley Roads, Empire, Aztec and Spring Streets
- Mechanised Tree Pruning - Pouto, West, West Coast, Mahuta, Johnson, Sarich, Te Maire, Redhill and Notorious West Roads
- Culvert Replacement - Omana, Homackey and Kirikopuni Valley Roads
- Spraying (urban) - Dargaville, Ruawai, Baylys, Te Kopuru, Maungaturoto, Kaiwaka, Mangawhai, Paparoa, Whakapirau, Pahi, Tinopai
- Spraying (rural) - Mangawhai, Kaiwaka, Maungaturoto, Paparoa, Ararua, Tinopai, Ruawai
- Unsealed pavement repairs - Omana and Homackey Roads
- Unsealed Pavement Strengthening - Kirikopuni Valley Road (tentative)



NOTE FOR DRIVERS ON UNSEALED ROADS

Unsealed roads require regular laying of maintenance aggregate. If tyres are low, road users can run the risk of punctures on freshly laid metal. This larger material is particularly prone to puncturing worn tyres, but is a necessary requirement during the winter months to ensure the roads are still safely traversable. Please take caution when travelling on freshly laid aggregate, and check the condition of your tyres- especially if you live on the unsealed network.

SEPTEMBER

Please note locations and times are subject to change, check website for most up to date information



Meeting Schedule

Council Briefing (Representation Review)

Friday 21 September
@ 09:30 am
Northern Wairoa War Memorial Hall, Dargaville

Council Meeting

Thursday 27 September
@ 09:30 am
Lighthouse Function Centre, Dargaville

Funding Committee (Creative Communities)

Thursday 27 September
@ 03:30 pm
Lighthouse Function Centre, Dargaville

Citizens Awards Committee

Tuesday 02 October
@ 01:00 pm
Wairoa Room, Council Offices, Dargaville

Council Meeting (Extraordinary)

Tuesday 09 October
@ 10:00 am
Northern Wairoa War Memorial Hall, Dargaville

Job Opportunities

For application details please visit -

www.kaipara.govt.nz

- Senior Asset Engineer - Roding
- Resource Consent Planners (all levels)
- Area Supervisor - Roding

Council would like to thank you for your co-operation as work is undertaken across the District to improve our communities and infrastructure. Please feel free to contact the Council's Customer Service Representatives on 0800 727 059 for more information.

